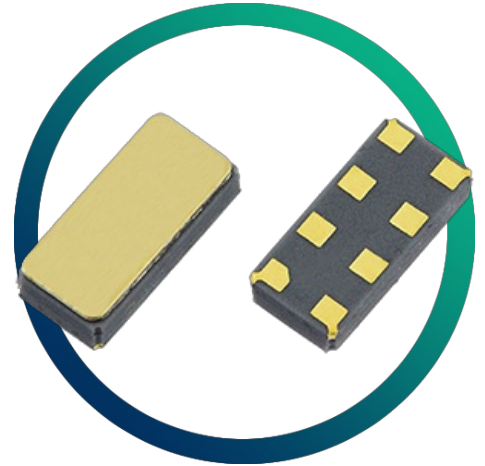


# RV-8803-C7

## RTC I<sup>2</sup>C bus High Accuracy

- High accuracy via digital temperature compensation
- Time stamp event input function
- I<sup>2</sup>C-Bus interface (up to 400kHz)
- AEC-Q200 compliant option
- Previously named RV8803C7



### CONFIGURABLE OPTIONS

Parameter	Option Code
Qualification	
Any	
Commercial	
AEC-Q200 (Automotive)	A

## SPECIFICATIONS

Frequencies (selectable)	32.768kHz, 1024Hz, 1Hz
Dimensions	3.2 x 1.5 x 0.8mm
Frequency tolerance (32.768kHz)	±10ppm typ, ±20ppm max, 25°C
Time accuracy	±1.5ppm max (0.13s/day), 0+50°C ±3ppm max (0.26s/day), -40+85°C ±7ppm max (0.6s/day), +85+105°C
Operating temperature range	-40 to +85°C *
Storage temperature range	-55 to +125°C
Supply voltage (V <sub>DD</sub> )	1.5 ~ 5.5V
Supply current (time-keeping, V <sub>DD</sub> =3.0V)	240nA typ / 350nA max
Ageing (25°C)	±3ppm max first year
Shock and vibration resistance	±5ppm, 5,000g, 0.3ms, ½ sine ±5ppm, 20g, 10.0 ~ 2,000Hz
Soldering condition	Reflow, 260°C, 20~40s

\* Supports +85 to +105°C with limitations

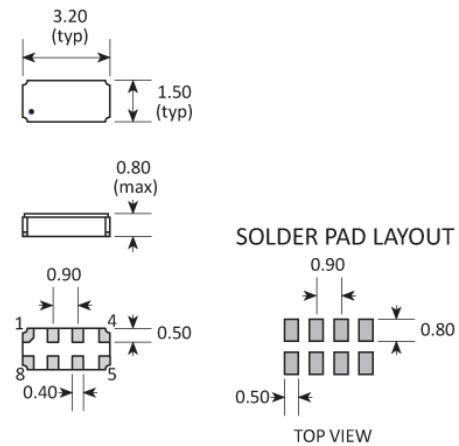
## ORDERING INFORMATION

To request a quotation for the RV-8803-C7 please use the configurable options form to choose the options you require and then submit your configured product to our team. Our expert advisers are always happy to help with your requirements and can be contacted on +44 1460 256 100 or at [sales@golledge.com](mailto:sales@golledge.com).

Following product selection you will be issued with a seven character Golledge part number. Your Golledge part number is the internationally accepted Golledge manufacturing part number (MPN) that should be used for all project documentation, including bills of materials (BoMs) and purchase orders.

If you have any queries regarding any of our documentation our dedicated sales team will be happy to help.

## PACKAGE DRAWING



PAD	CONNECTION	PAD	CONNECTION
1	Serial data (SDA)	5	Ground (VSS)
2	Frequency output (CLKOUT)	6	Interrupt output ( $\overline{\text{INT}}$ )
3	Supply voltage (VDD)	7	Event input (EVI)
4	Clock output enable (CLKOE)	8	Serial clock input (SCL)

Dimensions in mm

## TECHNICAL RESOURCES

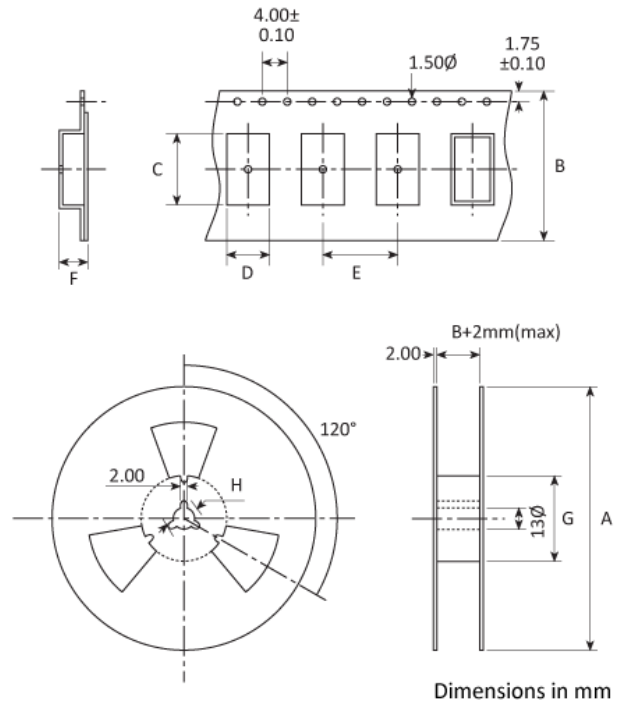
RV-8803-C7\_App-Manual.pdf  
RV-8803-C7\_Errata\_Sheet.pdf

**APPLICATIONS**

The RV-8803-C7 real time clock is a versatile component suitable for a wide range of applications and uses including:

- Automotive
- Commercial White Goods
- Healthcare
- Industrial
- Multi-circuit Power Metering
- Smart Metering
- Tracking Devices

**TAPE & REEL SPECIFICATION**



A:178\* / B:12 / C:3.5 / D:1.8 / E:4.0 / F:1.0 / G:61 / H:21

\*Larger reel sizes are available

**HANDLING & STORAGE**



Human Body Model (HBM) 1A (250V to <500V)





Moisture Sensitivity Level (MSL): 1 (or not applicable)


**CONSTRUCTION**

SON 8-pin ceramic package


**COMPLIANCE**


 Lead-free (< 0.1% by weight)

 RoHS compliant with no exemptions. [See our declaration](#)

 REACH compliant. [See our statement](#)

 Free of conflict minerals. [See our declaration](#)

 Free of Halogens. [See our declaration](#)

 Free of Ozone-depleting substances. [See our declaration](#)

**SUPPLY PARTNER**



The RV-8803-C7 is manufactured by Micro Crystal and stocked and supplied by Golledge.

**OTHER INFORMATION**

An evaluation/development board for the RV-8803-C7 is also available on request. Please contact our expert advisers at [sales@golledge.com](mailto:sales@golledge.com) for more information.

**BLOCK DIAGRAM**

