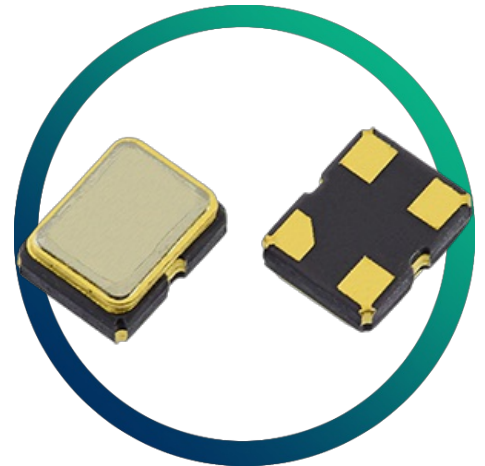


GXO-3200J

High Frequency, Tight Stability 2.5V Oscillator with 2520 Package



- High precision with tight stability options
- Wide operating temperature ranges
- High frequency fundamental - no multiplier
- Small and medium quantities also available
- Enable / disable tristate function

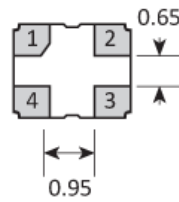
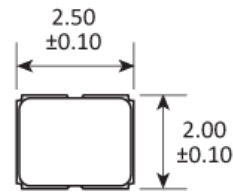
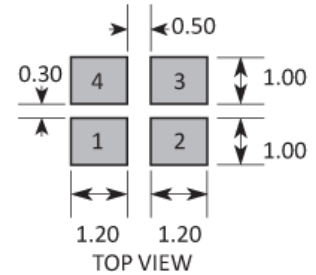
CONFIGURABLE OPTIONS

| Parameter | Option Code |
|-------------------------------|-------------|
| Frequency | |
| Frequency stability * | |
| * see note below | |
| Any | |
| ±2.5ppm max over -40 to +85°C | H |
| ±5.0ppm max over -40 to +85°C | G |
| ±10ppm max over -40 to +85°C | F |
| ±20ppm max over -40 to +105°C | D |
| ±25ppm max over -40 to +125°C | A |

* Frequency stability is inclusive of calibration @ 25°C, operating temperature range, supply voltage change, load change, shock and vibration. Option H inclusive of calibration @ 25°C and operating temperature range only.

SPECIFICATIONS

| | |
|-------------------------------------|--|
| Frequency range | 10.0 ~ 160MHz |
| Dimensions | 2.5 x 2.0 x 1.0mm |
| Storage temperature range | -55 to +125 °C |
| Supply voltage (V_{DD}) | +2.5V ($\pm 5\%$) |
| Supply current (max) | 11mA (10.0 ~ 80.0MHz) 20mA (80.0 ~ 160MHz) |
| Logic levels | '0' level = 10% V_{DD} max '1' level = 90% V_{DD} min |
| Start up time | 5ms max |
| Waveform symmetry | 45:55 max @ 50% V_{DD} |
| Driving ability | 15pF CMOS |
| Rise / fall time (10~90% V_{DD}) | 6ns max (≤ 40.0 MHz) 3ns max (> 40.0 MHz) |
| Enable / disable function | Tristate (control via pad 1) |
| Stand-by current | 10 μ A max |
| Phase jitter RMS | 0.3ps typ (12kHz ~ 20.0MHz) |

PACKAGE DRAWING

SOLDER PAD LAYOUT


| PAD | CONNECTION |
|-----|----------------|
| 1 | Enable/Disable |
| 2 | Ground |
| 3 | Output |
| 4 | Supply |

Dimensions in mm

ORDERING INFORMATION

To request a quotation for the GXO-3200J please use the configurable options form to choose the options you require and then submit your configured product to our team. Our expert advisers are always happy to help with your requirements and can be contacted on +44 1460 256 100 or at sales@golledge.com.

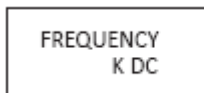
Following product selection you will be issued with a seven character Golledge part number. Your Golledge part number is the internationally accepted Golledge manufacturing part number (MPN) that should be used for all project documentation, including bills of materials (BoMs) and purchase orders.

If you have any queries regarding any of our documentation our dedicated sales team will be happy to help.

ENABLE / DISABLE FUNCTION

| Input (pad 1) | Output (pad 3) |
|---------------|----------------|
| Open | Enabled |
| '1' level | Enabled |
| '0' level | High Impedance |

MARKING

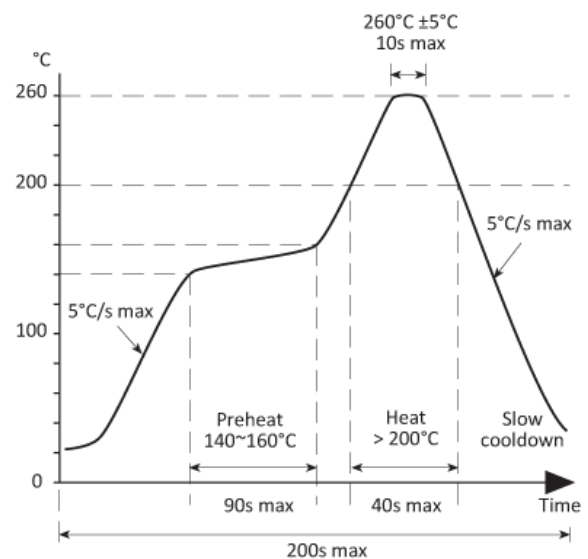


Marking type: Laser

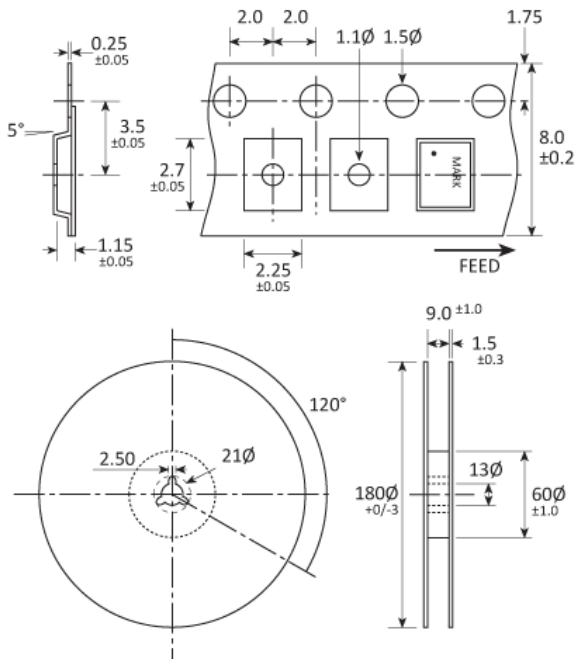
DC = Date Code in YM, eg. "GF" = Jun 2017

| | A | B | C | D | E | F | G | H | J | K | L | M |
|---|-----|-----|-----|-----|-----|-----|-----|-----|-----|-----|-----|-----|
| Y | 1 | 2 | 3 | 4 | 5 | 6 | 7 | 8 | 9 | 0 | | |
| M | Jan | Feb | Mar | Apr | May | Jun | Jul | Aug | Sep | Oct | Nov | Dec |

SOLDERING PROFILE



TAPE & REEL SPECIFICATION



Dimensions in mm

CONSTRUCTION

Ceramic body with gold-plated pads
Metal lid, seam sealed

HANDLING & STORAGE



Human Body Model (HBM) 1A (250V to <500V)



Moisture Sensitivity Level (MSL): 1 (or not applicable)

COMPLIANCE



Lead-free (< 0.1% by weight)



RoHS compliant with no exemptions. [See our declaration](#)



REACH compliant. [See our statement](#)



Free of conflict minerals. [See our declaration](#)



Free of Halogens. [See our declaration](#)



Free of Ozone-depleting substances. [See our declaration](#)