

# GVXO-E33L

## 3.3V Complementary LV-PECL VCXO with Low Phase Jitter

- Complementary LV-PECL outputs
- Multiplier-free design
- Enable / disable tristate function
- Designed for high speed data transfer



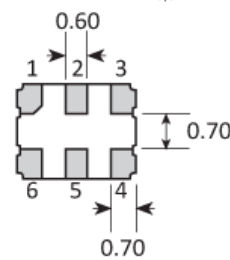
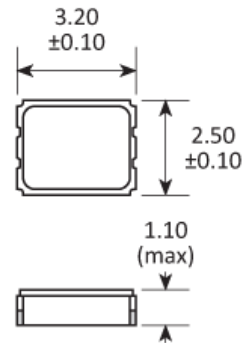
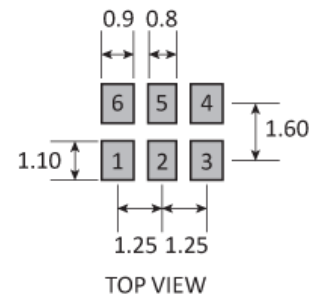
### CONFIGURABLE OPTIONS

Parameter	Option Code
Frequency	
Frequency pullability	
±50ppm min	
Frequency stability * see note below	
Any	
±50ppm max	B
±25ppm max	C
Operating temperature range	
Any	
-10 to +70°C	
-40 to +85°C	I

\* Frequency stability is inclusive of operating temperature range, supply voltage change and ageing, with  $V_{CTL} = +1.65V$

**SPECIFICATIONS**

Frequency range	40.0 ~ 250MHz
Dimensions	3.2 x 2.5 x 1.1mm
Voltage control ( $V_{CTL}$ )	+1.65V $\pm$ 1.50V, 10% linearity
Storage temperature range	-40 to +85 °C
Supply voltage ( $V_{DD}$ )	+3.3V ( $\pm$ 5%)
Supply current	50mA max
Output	Complementary LV-PECL
Test load	$R_T = 50\Omega$ $V_T = V_{DD} - 2.0V$
Logic levels	'0' level = $V_{DD} - 1.81 \sim V_{DD} - 1.62V$ max '1' level = $V_{DD} - 1.025 \sim V_{DD} - 0.88V$ min
Waveform symmetry	45:55 max @ 50% $V_{p-p}$
Rise / fall time	0.5ns max (20% ~ 80% $V_{p-p}$ )
Phase jitter	1ps max (12kHz ~ 20MHz)
Enable / disable function	Tristate (control via pad 2)

**PACKAGE DRAWING**

**SOLDER PAD LAYOUT**


PAD	CONNECTION
1	Control voltage
2	Enable / disable
3	Ground
4	Output 1 (Q)
5	Output 2 ( $\bar{Q}$ )
6	Supply

Dimensions in mm

## ORDERING INFORMATION

To request a quotation for the GVXO-E33L please use the configurable options form to choose the options you require and then submit your configured product to our team. Our expert advisers are always happy to help with your requirements and can be contacted on +44 1460 256 100 or at [sales@golledge.com](mailto:sales@golledge.com).

Once we've received your request our expert team will then produce a quotation tailored to meet your needs using the option codes you've selected.

Following product selection you will be issued with a seven character Golledge part number. Your Golledge part number is the internationally accepted Golledge manufacturing part number (MPN) that should be used for all project documentation, including bills of materials (BoMs) and purchase orders.

If you have any queries regarding any of our documentation our dedicated sales team will be happy to help.

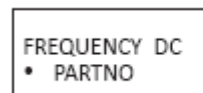
## ENABLE / DISABLE FUNCTION

Input (pad 2)	Output 1 (pad 4)	Output 2 (pad 5)
Open	Enabled	Enabled
'1' level ( $\geq 0.7 V_{DD}$ )	Enabled	Enabled
'0' level ( $\leq 0.3 V_{DD}$ )	High Impedance	High Impedance

## APPLICATIONS

Networking - Gigabit ethernet etc.  
 Storage - SAS, SATA, etc.  
 Telecomms - SONET, SDH etc.  
 Computing,  
 Instrumentation

## MARKING

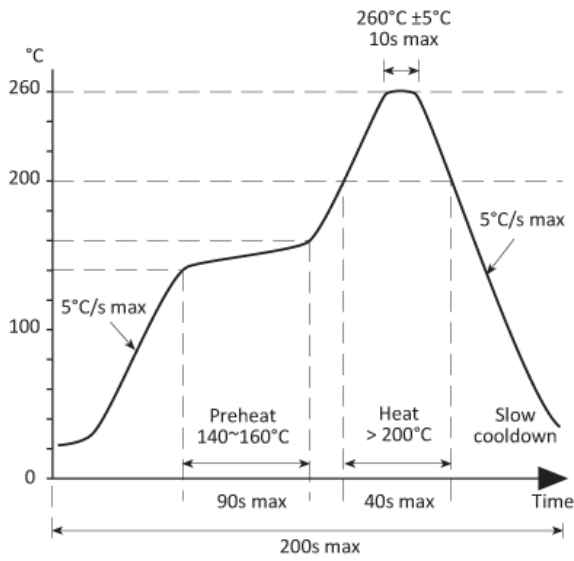


• Pin 1  
 Marking type: Laser

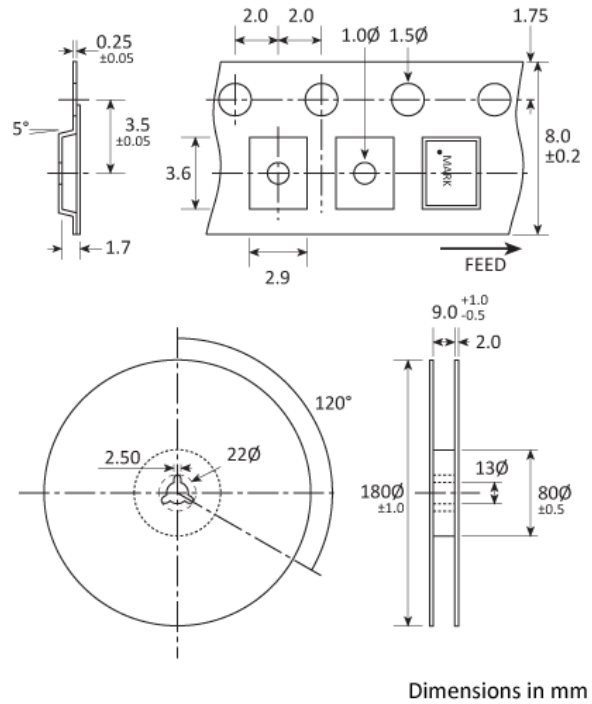
DC = Date Code in YM, eg. "GF" = Jun 2017

	A	B	C	D	E	F	G	H	J	K	L	M
Y	1	2	3	4	5	6	7	8	9	0		
M	Jan	Feb	Mar	Apr	May	Jun	Jul	Aug	Sep	Oct	Nov	Dec

**SOLDERING PROFILE**



**TAPE & REEL SPECIFICATION**



**HANDLING & STORAGE**



Human Body Model (HBM) 1A (250V to <500V)



Moisture Sensitivity Level (MSL): 1 (or not applicable)

**CONSTRUCTION**

Ceramic body with gold-plated pads. Metal lid, seam sealed

## COMPLIANCE

---



Lead-free (< 0.1% by weight)



RoHS compliant with no exemptions. [See our](#)

[declaration](#)



REACH compliant. [See our statement](#)



Free of conflict minerals. [See our declaration](#)



Free of Halogens. [See our declaration](#)



Free of Ozone-depleting substances. [See our](#)

[declaration](#)