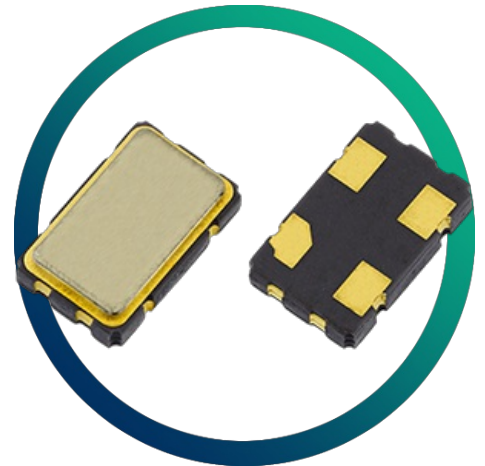


GVXO-523

3.3V SM VCXO - 5.0x3.2mm 4-pad package



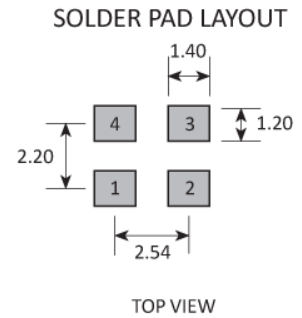
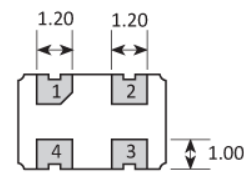
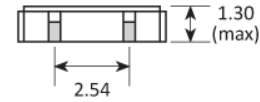
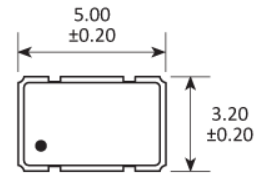
- Fundamental mode crystal up to 61.440MHz
- Choice of pullability and stability
- Miniature SM package
- Industrial operating temperature option

CONFIGURABLE OPTIONS

Parameter	Option Code
Frequency	
Frequency pullability	
Any	
±100ppm min (<30MHz only)	S
±80ppm min	P
±50ppm min	N
Frequency stability	
Any	
±50ppm max	B
±25ppm max	C
Operating temperature range	
Any	
-20 to +70 °C	
-40 to +85 °C	I

SPECIFICATIONS

Frequency range	1.50 ~ 61.440MHz
Dimensions	5.0 x 3.2 x 1.3mm
Voltage control	+1.65V ±1.50V, 10% linearity
Storage temperature range	-40 to +85 °C
Supply voltage (V_{DD})	+3.3V (±10%)
Supply current	10mA max (1.5 ~ 20.0MHz) 15mA max (>20.0 ~ 30.0MHz) 20mA max (>30.0 ~ 40.0MHz) 25mA max (>40.0MHz)
Driving ability	15pF CMOS
Logic levels	'0' level = 10% V_{DD} max '1' level = 90% V_{DD} min
Waveform symmetry	45:55 max @ 50% V_{DD}
Rise / fall time (10%~90% V_{DD})	10ns max (1.5 ~ 10.0MHz) 6ns max (>10.0MHz)
Start up time	10ms max
Period jitter RMS	6 ps max
Phase jitter RMS	1ps max, 12kHz ~ 20MHz
Phase noise	-130dBc/Hz typ @ 1kHz
Ageing	±5ppm / year max

PACKAGE DRAWING


PAD	CONNECTION
1	Control voltage
2	Ground
3	Output
4	Supply

Dimensions in mm

ORDERING INFORMATION

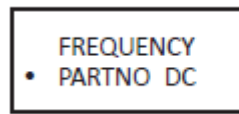
To request a quotation for the GVXO-523 please use the configurable options form to choose the options you require and then submit your configured product to our team. Our expert advisers are always happy to help with your requirements and can be contacted on +44 1460 256 100 or at sales@golledge.com.

Once we've received your request our expert team will then produce a quotation tailored to meet your needs using the option codes you've selected.

Following product selection you will be issued with a seven character Golledge part number. Your Golledge part number is the internationally accepted Golledge manufacturing part number (MPN) that should be used for all project documentation, including bills of materials (BoMs) and purchase orders.

If you have any queries regarding any of our documentation our dedicated sales team will be happy to help.

MARKING

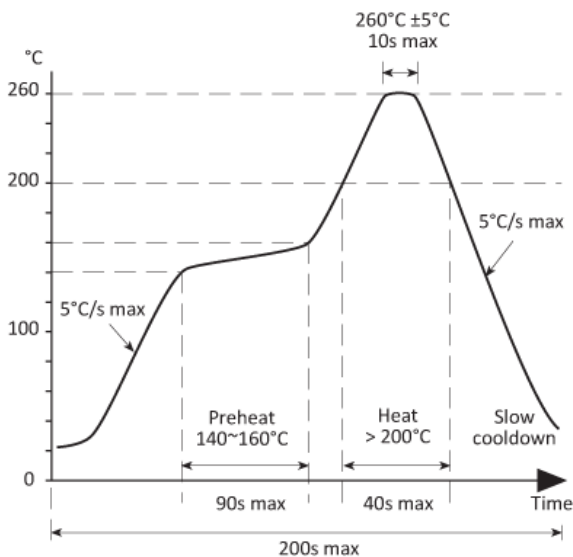


- Pin 1
- Marking type: Laser

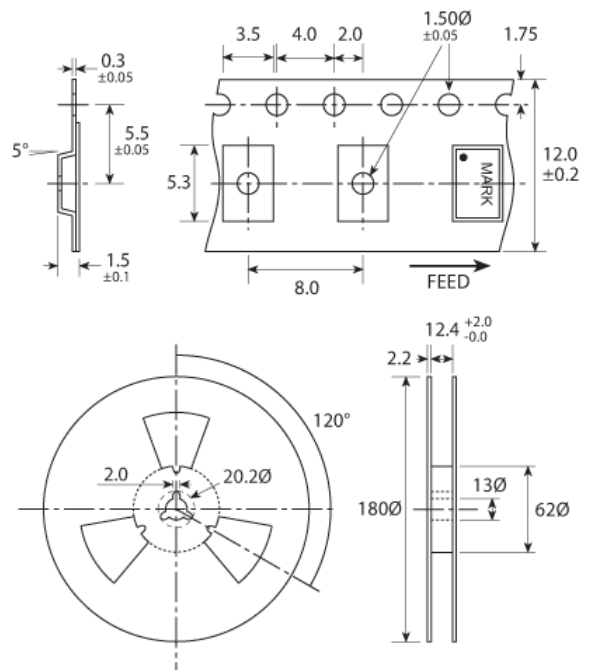
DC = Date Code in YM, eg. "GF" = Jun 2017

	A	B	C	D	E	F	G	H	J	K	L	M
Y	1	2	3	4	5	6	7	8	9	0		
M	Jan	Feb	Mar	Apr	May	Jun	Jul	Aug	Sep	Oct	Nov	Dec

SOLDERING PROFILE



TAPE & REEL SPECIFICATION



Dimensions in mm

HANDLING & STORAGE



Human Body Model (HBM) 1A (250V to <500V)



Moisture Sensitivity Level (MSL): 1 (or not applicable)

CONSTRUCTION

Ceramic body with gold-plated pads

Metal lid

Seam sealed

COMPLIANCE



Lead-free (< 0.1% by weight)



RoHS compliant with no exemptions. [See our](#)

[declaration](#)



REACH compliant. [See our statement](#)



Free of conflict minerals. [See our declaration](#)



Free of Halogens. [See our declaration](#)



Free of Ozone-depleting substances. [See our](#)

[declaration](#)