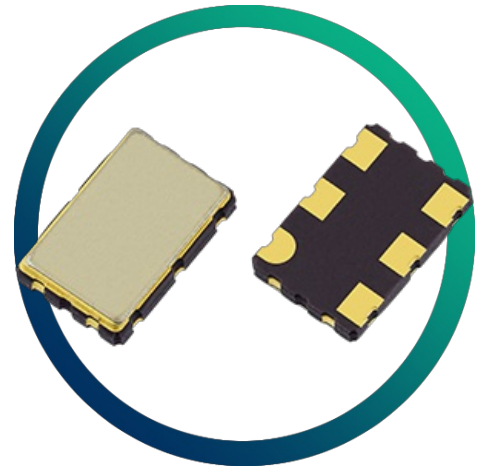


GVXO-52

Ultra high frequency VCXO with complementary LVDS outputs



- Frequencies up to 800MHz
- Complementary LVDS outputs
- Fast rise / fall times
- Enable / disable tristate function

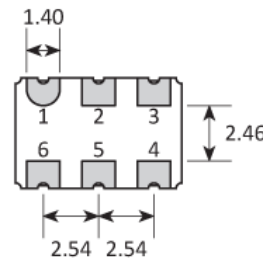
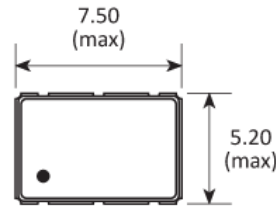
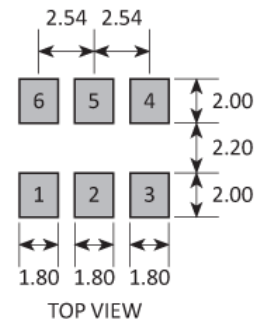
CONFIGURABLE OPTIONS

Parameter	Option Code
Frequency	
Frequency pullability	
±150ppm min	
Frequency stability	
* see note below	
Any	
±50ppm max	B
±25ppm max	C
Operating temperature range	
Any	
-10 to +70°C	
-40 to +85°C	I

* Frequency stability is inclusive of operating temperature range, supply voltage change and ageing, with $V_{CTL} = +1.65V$

SPECIFICATIONS

Frequency range	12.0 ~ 800MHz
Dimensions	7.5 x 5.2 x 1.6mm
Voltage control (V_{CTL})	+1.65V \pm 1.50V, 10% linearity
Storage temperature range	-40 to +85 °C
Supply voltage (V_{DD})	+3.3V (\pm 5%)
Supply current	65mA max (\leq 100MHz) 120mA max ($>$ 100 ~ 800MHz)
Output	LVDS
Offset voltage	1.25V typ
Differential output voltage	0.33V typ
Output load	100 Ω
Logic levels	'0' level = +1.7V max '1' level = +2.2V min
Waveform symmetry	40:60 max @ 50% V_{p-p}
Rise / fall time	1.0ns max (20% ~ 80% V_{p-p})
Phase jitter	5ps max (12kHz~20MHz)

PACKAGE DRAWING

SOLDER PAD LAYOUT


PAD	CONNECTION
1	Control voltage
2	Enable / disable
3	Ground
4	Output 1 (Q)
5	Output 2 (\bar{Q})
6	Supply

Dimensions in mm

ORDERING INFORMATION

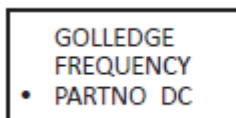
To request a quotation for the GVXO-52 please use the configurable options form to choose the options you require and then submit your configured product to our team. Our expert advisers are always happy to help with your requirements and can be contacted on +44 1460 256 100 or at sales@golledge.com.

Once we've received your request our expert team will then produce a quotation tailored to meet your needs using the option codes you've selected.

Following product selection you will be issued with a seven character Golledge part number. Your Golledge part number is the internationally accepted Golledge manufacturing part number (MPN) that should be used for all project documentation, including bills of materials (BoMs) and purchase orders.

If you have any queries regarding any of our documentation our dedicated sales team will be happy to help.

MARKING



- Pin 1
- Marking type: Laser

DC = Date Code in YM, eg. "GF" = Jun 2017

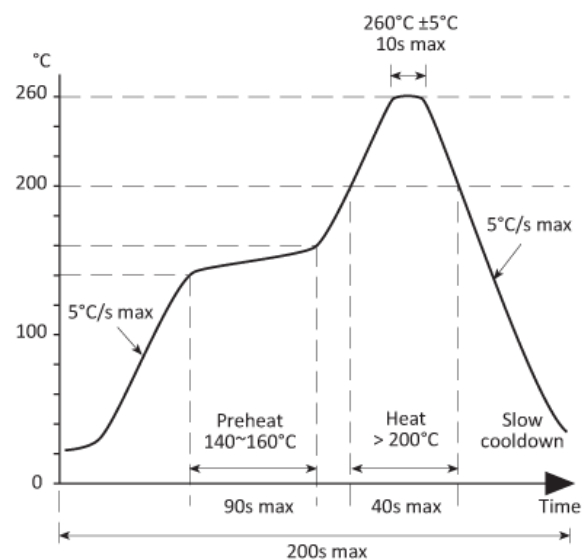
	A	B	C	D	E	F	G	H	J	K	L	M
Y	1	2	3	4	5	6	7	8	9	0		
M	Jan	Feb	Mar	Apr	May	Jun	Jul	Aug	Sep	Oct	Nov	Dec

ENABLE / DISABLE FUNCTION

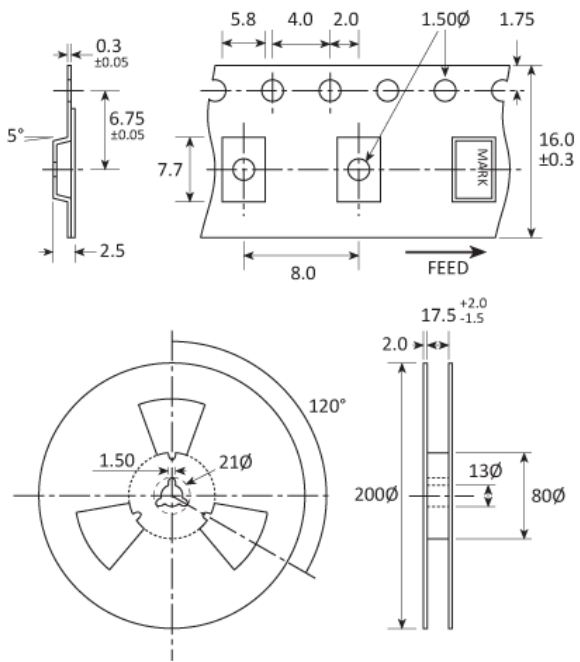
Input (pad 2)	Output 1 (pad 4)	Output 2 (pad 5)
Open	Active	Active
'1' level V_{IH}	High Z	High Z
'0' level V_{IL}	Active	Active

'0' level: $V_{IL} \leq +1.70V$, '1' level: $V_{IH} \geq +2.20V$

SOLDERING PROFILE



TAPE & REEL SPECIFICATION



Dimensions in mm

CONSTRUCTION

Ceramic body with gold-plated pads
 Metal lid
 Seam sealed

HANDLING & STORAGE



Human Body Model (HBM) 1A (250V to <500V)



Moisture Sensitivity Level (MSL): 1 (or not applicable)

COMPLIANCE

Please refer to our **DOCUMENTS** section for more information.



Lead-free (< 0.1% by weight)



RoHS compliant with no exemptions.



REACH compliant.



Free of conflict minerals.



Free from halogens.



Free from ozone-depleting substances.