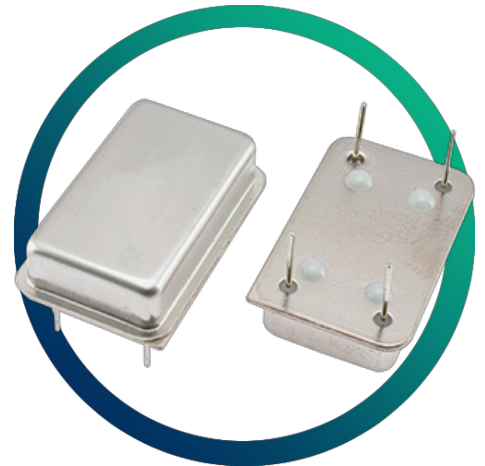


GVXO-41F

5V voltage controlled oscillator - 14 pin DIL package

- Low cost for volume applications
- Choice of pullability & stability
- Industrial temperature range option



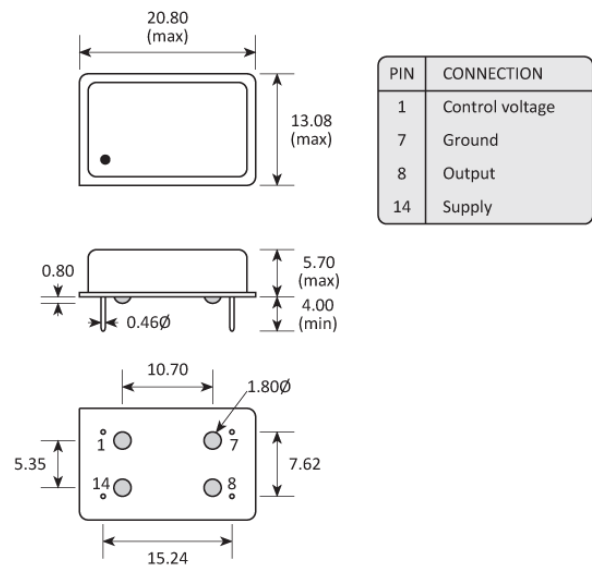
CONFIGURABLE OPTIONS

| Parameter | Option Code |
|-----------------------------|-------------|
| Frequency | |
| Frequency pullability | |
| Any | |
| ±80ppm min | N |
| ±150ppm min | S |
| ±200ppm min | W |
| Frequency stability | |
| Any | |
| ±100ppm max | A |
| ±50ppm max | B |
| ±25ppm max | C |
| ±20ppm max | D |
| ±15ppm max | E |
| Operating temperature range | |
| Any | |
| -10 to +70°C | |
| -40 to +85°C | I |

SPECIFICATIONS

| | |
|--|---|
| Frequency range | 1.544 ~ 33.0MHz |
| Dimensions | 20.80 x 13.08 x 5.70mm |
| Package | 14 pin DIL (full size) |
| Voltage control | +2.5V \pm 2.5V, 10% linearity >100k Ω input impedance |
| Ageing | \pm 5.0ppm max per year |
| Storage temperature range | -55 to +125 °C |
| Supply voltage (V _{DD}) | +5.0V (\pm 5%) |
| Supply current | 20mA max (<20.0MHz) 30mA max (20.0 ~ 33.0MHz) |
| Driving ability | 30pF CMOS 5 LSTTL |
| Logic levels | '0' level = +0.4V max '1' level = 90%V _{DD} min |
| Waveform symmetry @ 50%V _{DD} | 40:60 max |
| Rise / fall time | 6ns max (0.4V ~ 90%V _{DD} min) |

PACKAGE DRAWING



| PIN | CONNECTION |
|-----|-----------------|
| 1 | Control voltage |
| 7 | Ground |
| 8 | Output |
| 14 | Supply |

Dimensions in mm

ORDERING INFORMATION

To request a quotation for the GVXO-41F please use the configurable options form to choose the options you require and then submit your configured product to our team. Our expert advisers are always happy to help with your requirements and can be contacted on +44 1460 256 100 or at sales@golledge.com.

Once we've received your request our expert team will then produce a quotation tailored to meet your needs using the option codes you've selected.

Following product selection you will be issued with a seven character Golledge part number. Your Golledge part number is the internationally accepted Golledge manufacturing part number (MPN) that should be used for all project documentation, including bills of materials (BoMs) and purchase orders.

If you have any queries regarding any of our documentation our dedicated sales team will be happy to help.

HANDLING & STORAGE



Human Body Model (HBM) 1A (250V to <500V)




Moisture Sensitivity Level (MSL): 1 (or not applicable)


CONSTRUCTION

Resistance weld


COMPLIANCE


Please refer to our **DOCUMENTS** section for more information.


 Lead-free (< 0.1% by weight)

 RoHS compliant with no exemptions.

 REACH compliant.

 Free of conflict minerals.

 Free from halogens.

 Free from ozone-depleting substances.