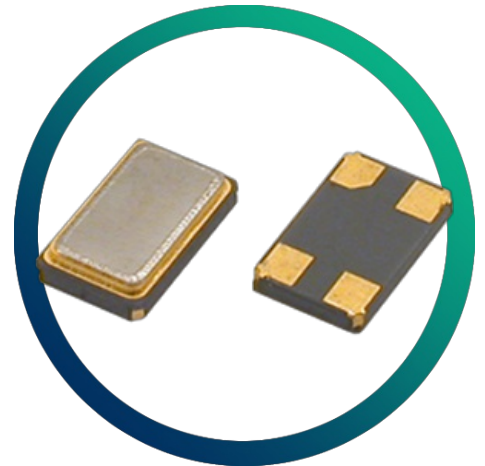


GSX-433

4.0 x 2.5mm SM Crystal for Bluetooth/Wireless



- Good frequency perturbation
- Metal lid can be grounded to minimise EMI
- Seam sealed for excellent long-term stability
- Ultra-miniature for maximum space saving
- Ideal for Bluetooth / Wireless applications

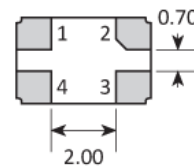
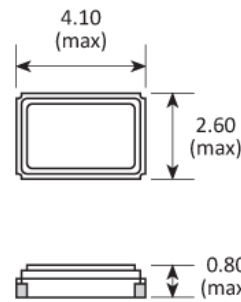
CONFIGURABLE OPTIONS

Parameter	Option Code
Frequency	
Calibration tolerance	
Any	
±10ppm	1
±15ppm	P
±20ppm	2
Temperature stability	
Any	
±10ppm	1
±15ppm	P
±20ppm	2
±30ppm	3
Operating temperature range	
Any	
-10 to +60°C	1
-20 to +70°C	2
-30 to +80°C	3
Circuit condition	
Any	
9pF	N
12pF	B
16pF	D
Series resonant	S
Oscillation mode	
Fundamental	F

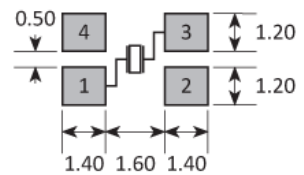
SPECIFICATIONS

Frequency range	12.0 ~ 44.0MHz
Dimensions	4.0 x 2.5 x 0.8mm
Storage temperature range	-40 to +85°C
Equivalent series resistance	60Ω max
Frequency perturbation	±1ppm max
Ageing	±1ppm max first year
Test drive level	10μW typ, 100μW max
Soldering condition	260°C, 10 sec x2 max .

PACKAGE DRAWING



SOLDER PAD LAYOUT



TOP VIEW

PAD	CONNECTION
1	Crystal
2	Ground & lid
3	Crystal
4	Ground & lid

Dimensions in mm

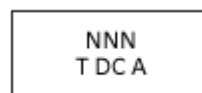
ORDERING INFORMATION

To request a quotation for the GSX-433 please use the configurable options form to choose the options you require and then submit your configured product to our team. Our expert advisers are always happy to help with your requirements and can be contacted on +44 1460 256 100 or at sales@golledge.com.

Following product selection you will be issued with a seven character Golledge part number. Your Golledge part number is the internationally accepted Golledge manufacturing part number (MPN) that should be used for all project documentation, including bills of materials (BoMs) and purchase orders.

If you have any queries regarding any of our documentation our dedicated sales team will be happy to help.

MARKING



Marking type: Laser
 NNN = Part ID code
 A = Optional factory mark

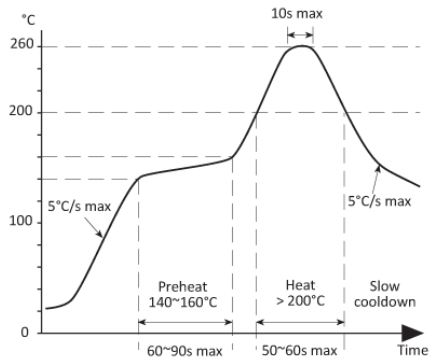
DC = Date code in YW

Year	2013	2014	2015	2016
	2017	2018	2019	2020
Code	Z	z	<u>Z</u>	<u>z</u>

Week codes:
 A ~ Z: weeks 1 to 26
 a ~ z: weeks 27 to 52

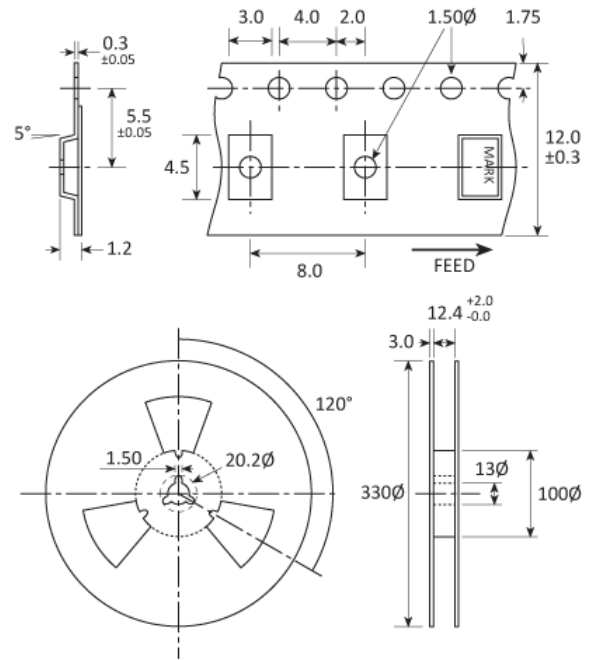
Example: "zC" = 2018 week 3

SOLDERING PROFILE



Solderability limits: 260°C max x 10sec max x 2 max

TAPE & REEL SPECIFICATION



Dimensions in mm

HANDLING & STORAGE



Human Body Model (HBM) 1A (250V to <500V)



Moisture Sensitivity Level (MSL): 1 (or not applicable)

CONSTRUCTION

Ceramic body with gold-plated pads Metal lid, seam sealed

COMPLIANCE

Please refer to our **DOCUMENTS** section for more information.



Lead-free (< 0.1% by weight)



RoHS compliant with no exemptions.



REACH compliant.



Free of conflict minerals.



Free from halogens.



Free from ozone-depleting substances.