

SAW Filter 1650.50MHz
Part No: MP10767

Model: TA2546A
Rev No: 1

A. MAXIMUM RATING:

Electrostatic Sensitive Device (ESD)

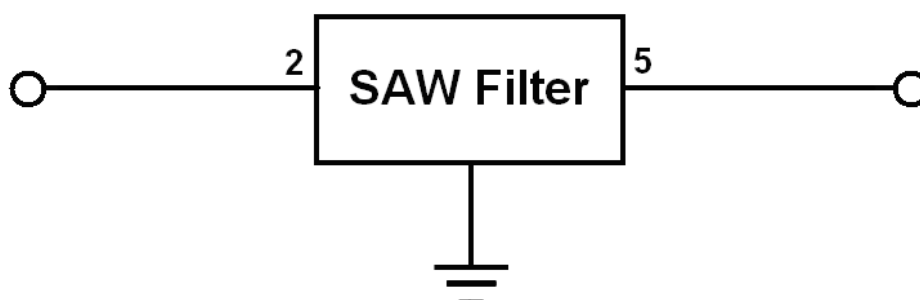
1. Input Power Level: 20dBm
2. DC Voltage: 0V
3. Operating Temperature: -55°C to +85°C
4. Storage Temperature: -55°C to +85°C
5. Moisture Sensitive Level (MSL): Level 1

B. ELECTRICAL CHARACTERISTICS:

1. Terminating source impedance (single): $Z_S = 50\Omega$
2. Terminating load impedance (single): $Z_L = 50\Omega$

Item	Unit	Min	Typ.	Max
Center Frequency	MHz	-	1650.5	-
Insertion Loss (1626.5 ~ 1675MHz)	dB	-	1.8	3.5
Amplitude Ripple (1626.5 ~ 1675MHz)	dB	-	0.8	1.5
Return Loss (1626.5 ~ 1675MHz)	dB	9	11	-
Attenuation (Reference from 0dB)				
10 ~ 1559MHz	dB	33	36	-
1576.5MHz	dB	30.5	49	-
1610MHz	dB	8	16	-
1736 ~ 1756MHz	dB	35	46	-
2400 ~ 2500MHz	dB	35	48	-
Temperature Coefficient of Frequency	ppm/K	-	-36	-

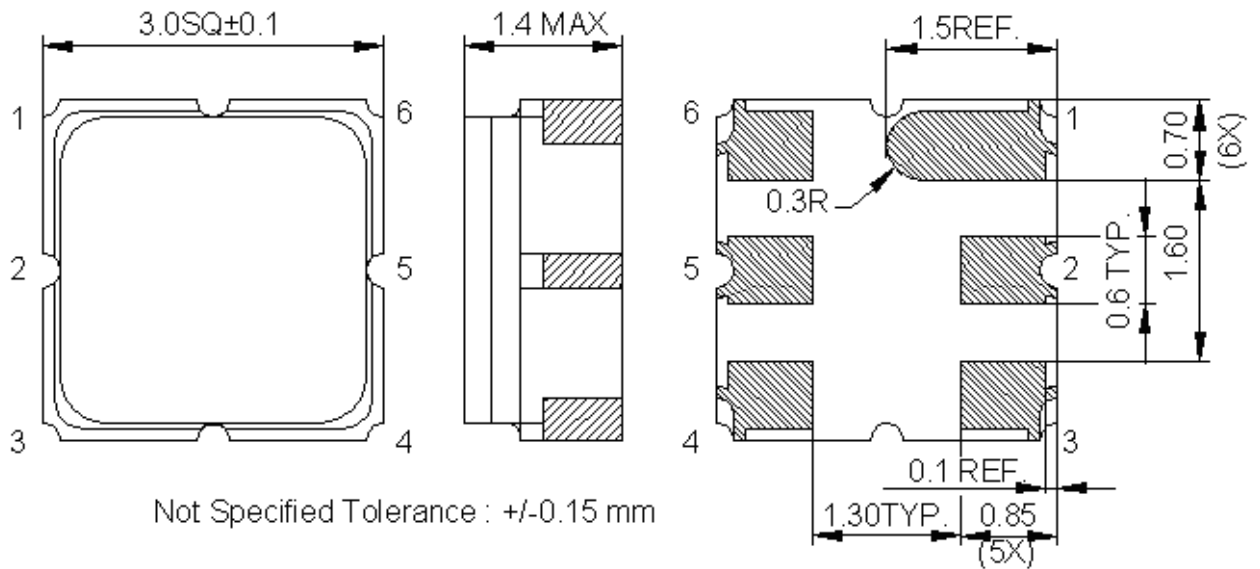
C. TEST CIRCUIT:



SAW Filter 1650.50MHz
Part No: MP10767

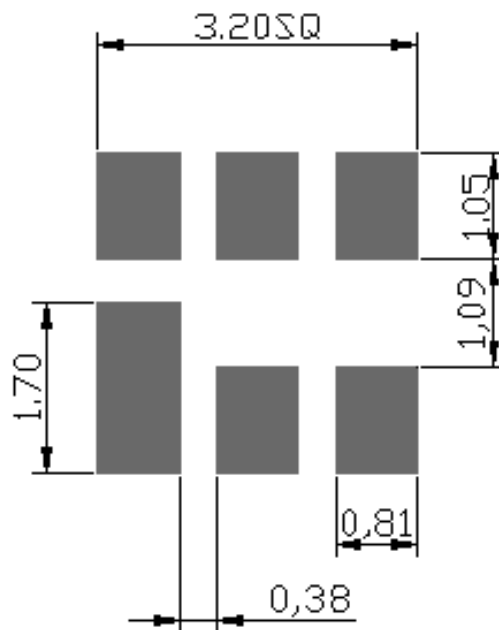
Model: TA2546A
Rev No: 1

D. OUTLINE DRAWING:



- 2: Input
- 5: Output
- Other: Ground
- Unit: mm

E. PCB FOOTPRINT:

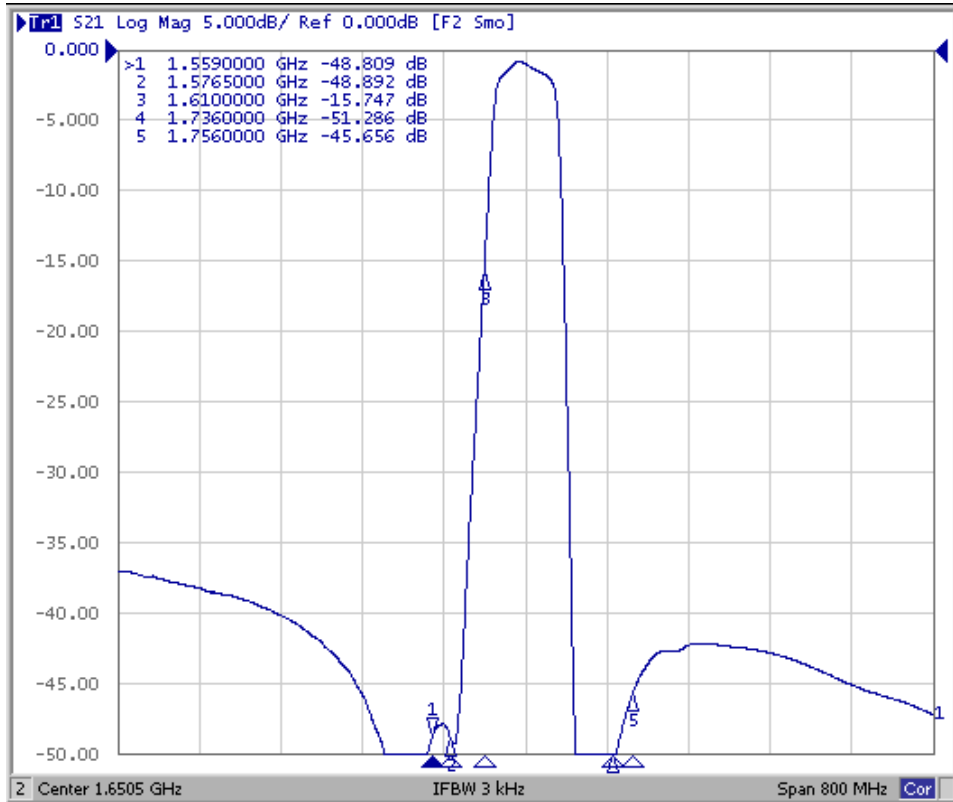


SAW Filter 1650.50MHz
Part No: MP10767

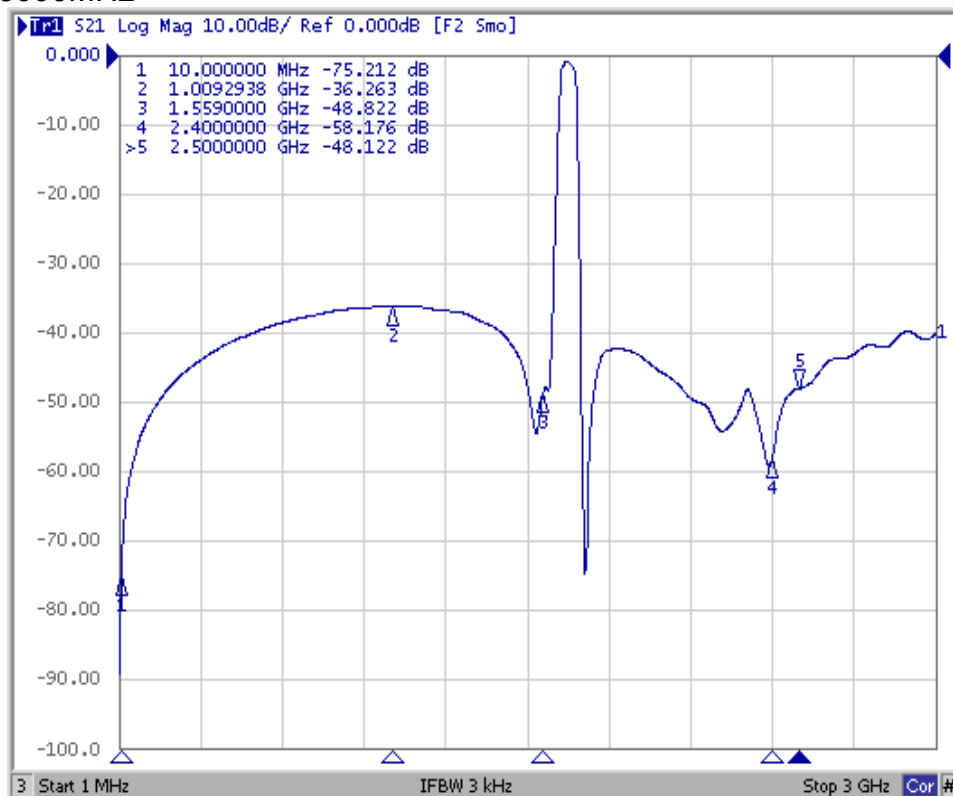
Model: TA2546A
Rev No: 1

F. FREQUENCY CHARACTERISTICS:

1. Span 800MHz



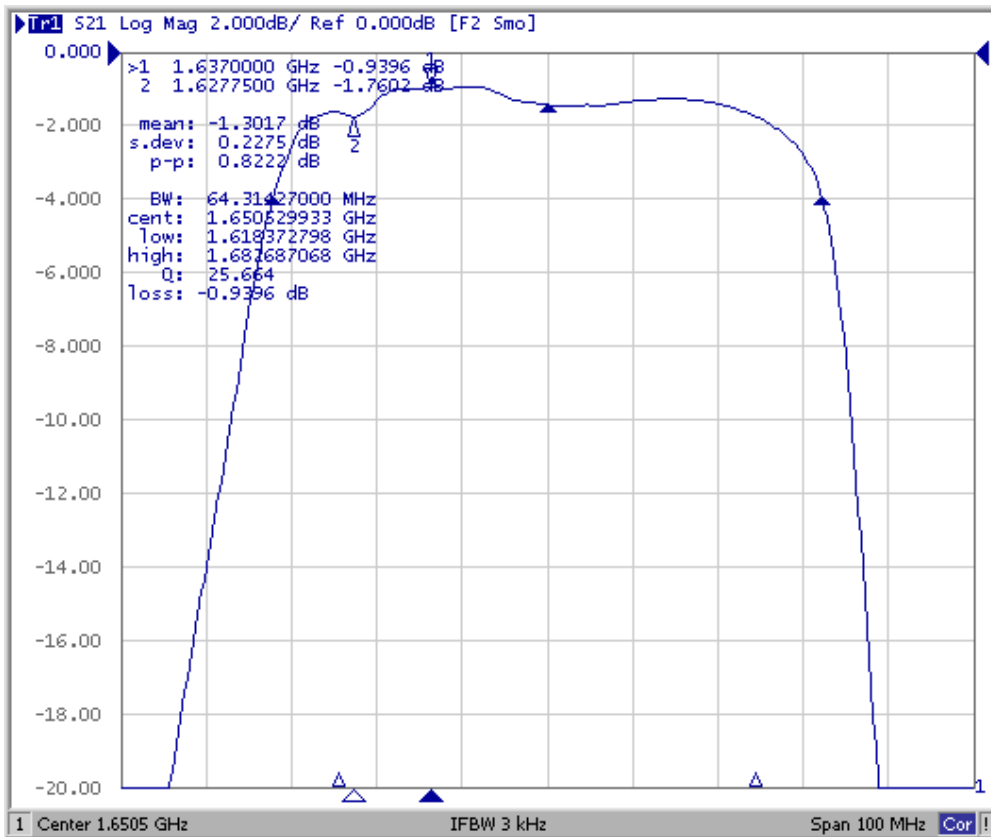
2. Span 3000MHz



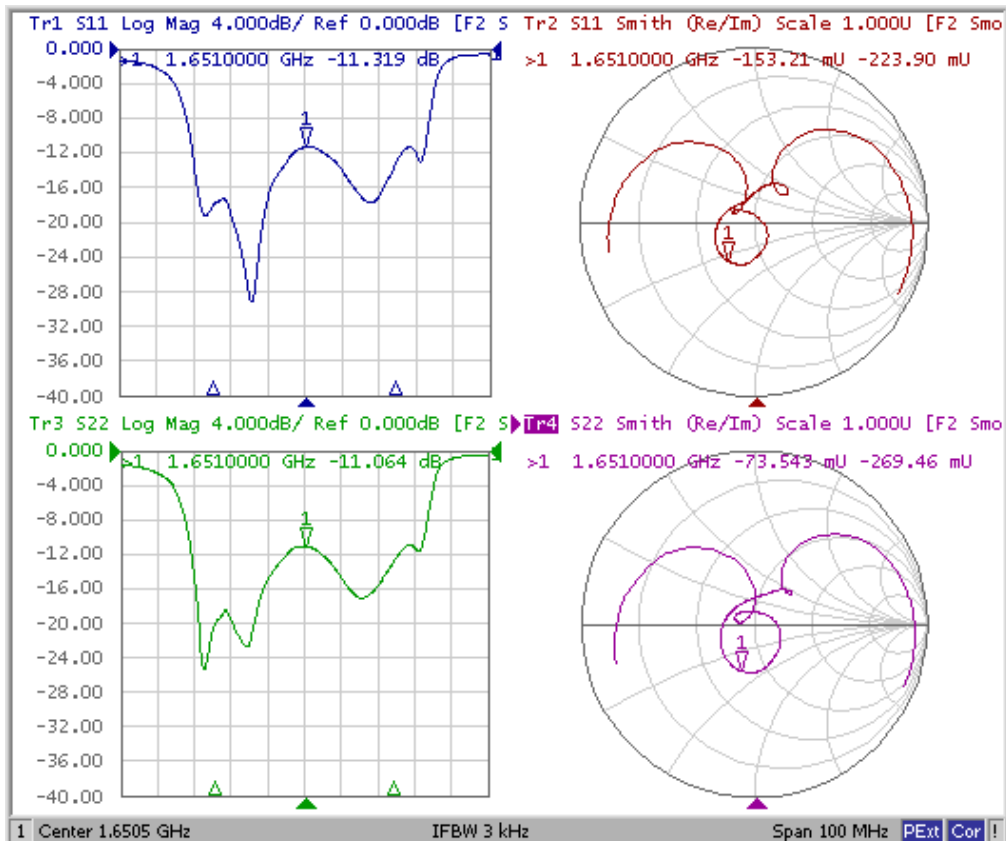
SAW Filter 1650.50MHz
Part No: MP10767

Model: TA2546A
Rev No: 1

3. Span 100MHz



4. Reflection Characteristic

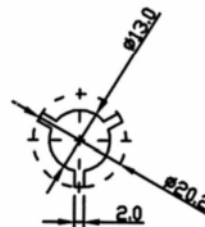
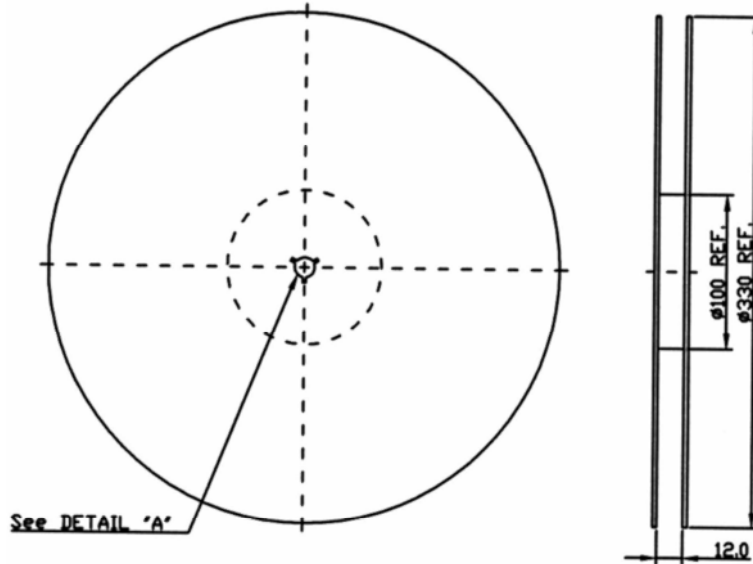


SAW Filter 1650.50MHz
Part No: MP10767

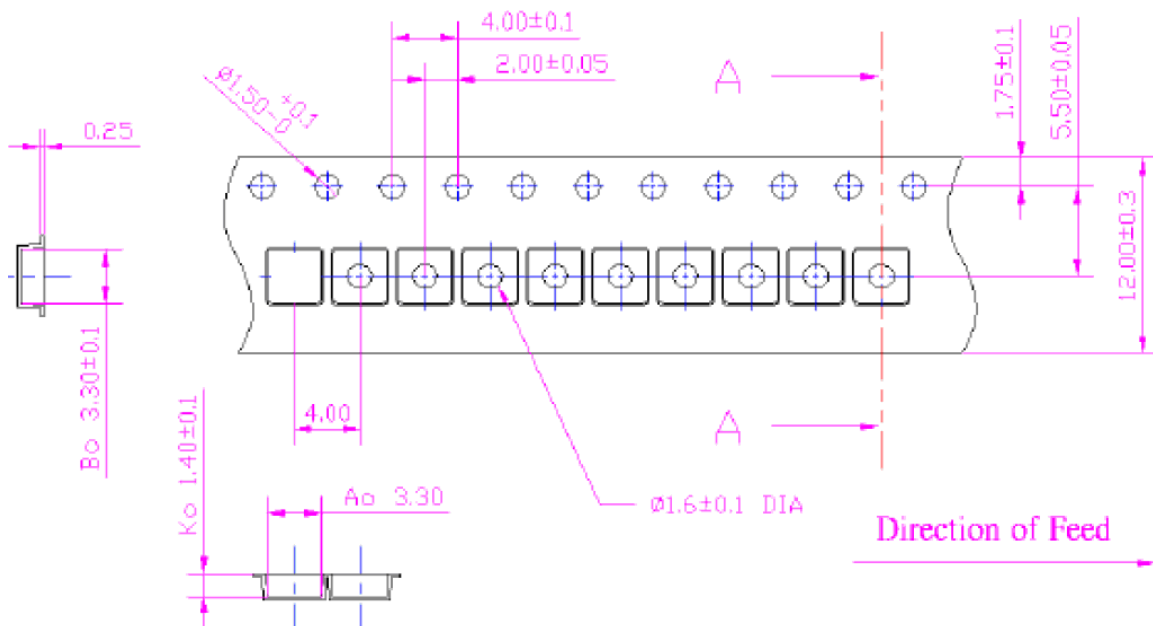
Model: TA2546A
Rev No: 1

G. PACKING:

1. Reel Dimensions



2. Tape Dimensions



SAW Filter 1650.50MHz
Part No: MP10767

Model: TA2546A
Rev No: 1

H. RECOMMENDED REFLOW PROFILE:

1. Preheating shall be fixed at 150~180°C for 60~90 seconds.
2. Ascending time to preheating temperature 150°C shall be 30 seconds min.
3. Heating shall be fixed at 220°C for 50~80 seconds and at 260°C +0/-5°C peak (20~40 sec).
4. Time: 2 times.

