

Product Description

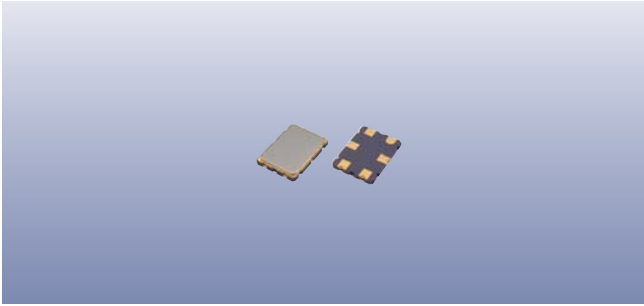
Description:	29.2550MHz 29R15B1 SM Filter
Product family:	GSF-75
Category:	Crystal Filter
Order code:	MP05825

Dimensions

Refer to package drawing: **D0132-A**

Electrical Specifications

Parameter	Value	Notes
Nominal frequency:	29.2550MHz	
Model:	29R15B1	
Pass bandwidth:	-3.0dB @ ±7.5kHz min	
Attenuation bandwidth:	-30.0dB @ ±25.0kHz max	
Guaranteed attenuation:	80.0dB min 70.0dB min 40.0dB min	F _O -910kHz F _O -1000 ~ -200kHz F _O +600 ~ +1000kHz
Inband ripple:	1.0dB max	
Insertion loss:	4.0dB max	
Terminating impedance:	1000Ω ±10% // 2.5pF ±0.5pF	
Coupling capacitance:	8.0pF ±0.5pF	Between pads 2 & 5 and ground
Operating temperature range:	-25 to +75°C	
Storage temperature range:	-40 to +85°C	
Number of poles:	4	



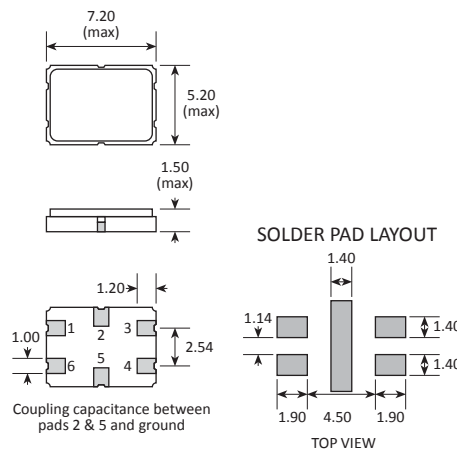
Product Family

GSF-75

Construction

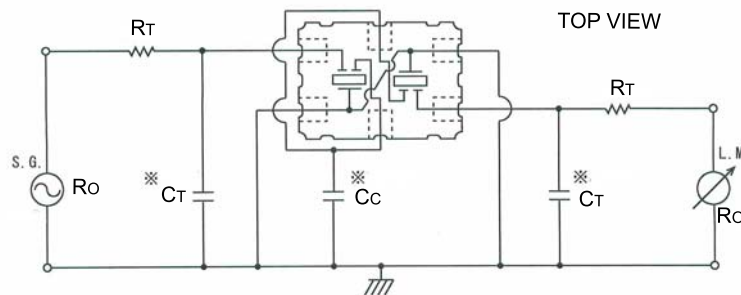
- ▮▮▮▮ Ceramic package with metal lid
- ▮▮▮▮ Hermetically sealed

Dimensions (mm)



PAD	CONNECTION
1	Ground
2	Connect with pad 5 & C _c
3	In / Out
4	Ground
5	Connect with pad 2 & C _c
6	Out / In

Test Circuit



Z_T: Terminating impedance (R_T + R_o) // C_T
 ※ Including strays