

## Product Description

Description:	32.0MHz GSX-323/1P3MF SM Crystal
Product family:	GSX-323
Category:	SM Quartz Crystal
Order code:	MP07655

## Features

- ▶▶▶ Metal lid can be grounded to minimise EMI
- ▶▶▶ Seam sealed for excellent long-term stability
- ▶▶▶ Ultra-miniature for maximum space saving

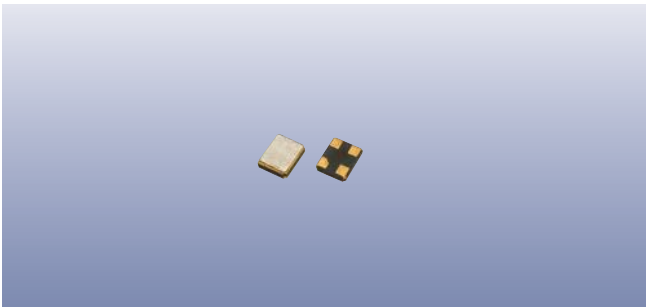
## Additional Information

For further information regarding packaging, construction, material composition, soldering profile and environment, please refer to **GSX-323 Product Information sheet**

For dimensions, refer to package drawing: **D0280-A**

## Electrical Specifications

Parameter	Value	Notes
Nominal frequency:	32.0MHz	
Calibration tolerance:	±10ppm	@25°C ±3°C
Temperature stability:	±15ppm	Referred to frequency at 25°C
Operating temperature range:	-30 to +85°C	
Storage temperature range:	-40 to +105°C	
Circuit condition (C <sub>L</sub> ):	8pF	
Static capacitance (C <sub>0</sub> ):	3pF max	
Oscillation mode:	Fundamental	
Equivalent series resistance:	50Ω max	
Ageing:	±1ppm	Per year
Test drive level:	50μW typ, 100μW max	



## Construction

- ▶ Ceramic body with gold-plated pads
- ▶ Metal lid, seam sealed

## Composition



This product is lead-free, and is fully compliant with the RoHS directive 2011/65/EC



## Packaging & Handling

Production quantities supplied on T&R, 3k pcs per reel.  
Small quantities may be supplied on tape (no reel), or in bulk.

## Marking

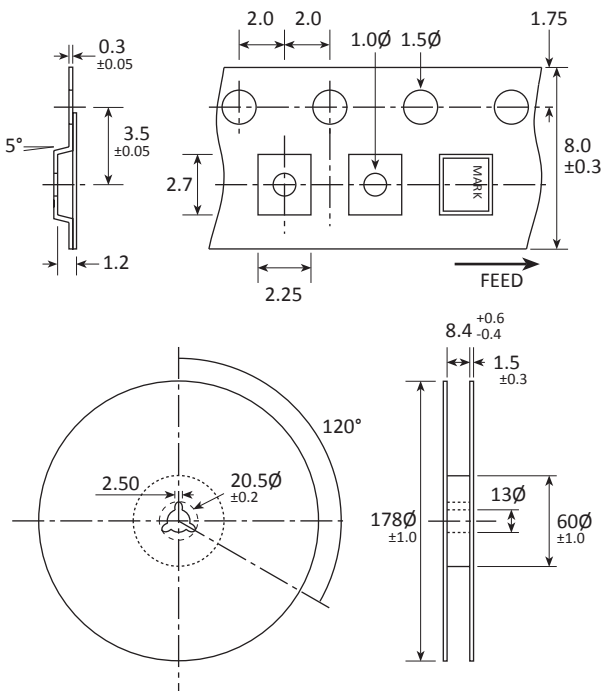
FREQUENCY  
T DC

Marking type: Laser  
DC = Date code in WY, as shown below  
Example: "dJ" = 2013 week 30

Year	2013	2014	2015	2016
	2017	2018	2019	2020
Code	J	J	J	J

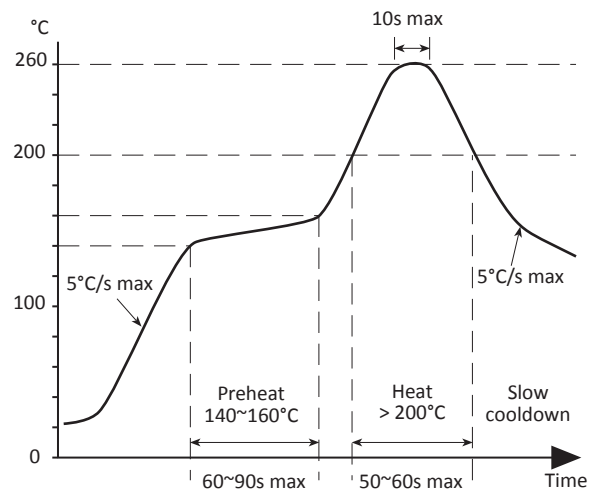
Week codes:  
A ~ Z: weeks 1 to 26  
a ~ z: weeks 27 to 52

## Tape & Reel Specification

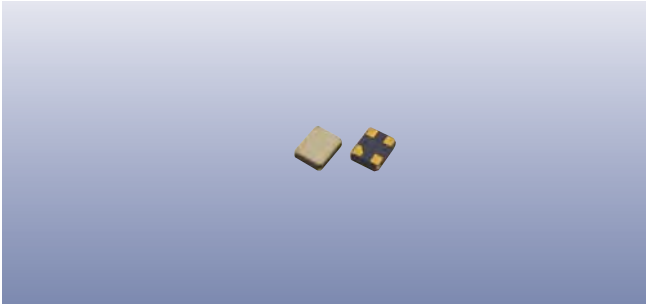


Not to scale. Dimensional tolerances  $\pm 0.1\text{mm}$  unless otherwise stated.

## Soldering Profile



Maximum solder resistance: 260°C x 10 secs x 2.



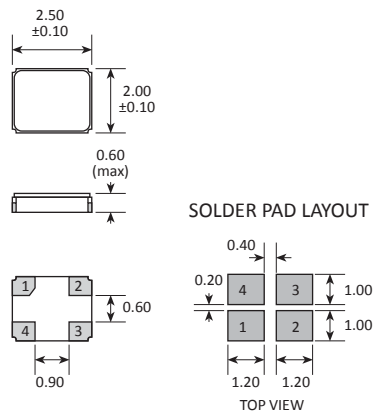
## Product Family

GSX-323

## Construction

- ▮▮▮▮▮▮ Ceramic body with gold-plated pads
- ▮▮▮▮▮▮ Metal lid, seam sealed

## Dimensions (mm)



PAD	CONNECTION
1	Crystal
2	Ground & lid
3	Crystal
4	Ground & lid