

Product Description

Description:	38.40MHz GSX-323/124AF SM Crystal
Product family:	GSX-323
Category:	SM Quartz Crystal
Order code:	MP07449

Features

- ▶ Metal lid can be grounded to minimise EMI
- ▶ Seam sealed for excellent long-term stability
- ▶ Ultra-miniature for maximum space saving

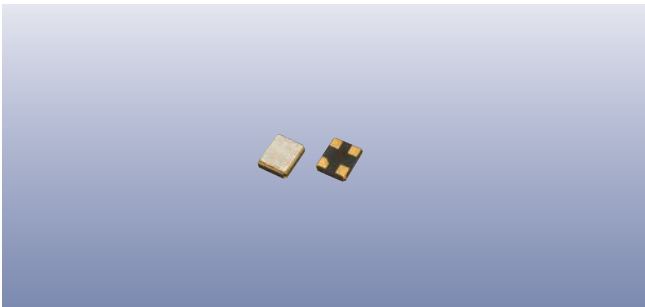
Additional Information

For further information regarding packaging, construction, material composition, soldering profile and environment, please refer to **GSX-323 Product Information sheet**

For dimensions, refer to package drawing: **D0280-A**

Electrical Specifications

Parameter	Value	Notes
Nominal frequency:	38.40MHz	
Calibration tolerance:	±10ppm	At 25°C ±3°C
Temperature stability:	±20ppm	Referred to frequency at 25°C
Operating temperature range:	-40 to +85°C	
Storage temperature range:	-40 to +105°C	
Circuit condition:	10pF	
Pulling sensitivity:	14.2ppm/pF typ	
Static capacitance (C ₀):	3pF max	
Oscillation mode:	Fundamental	
Equivalent series resistance:	40Ω max	
Ageing:	±2ppm	Per year
Test drive level:	10μW typ, 100μW max	



Construction

- ▶ Ceramic body with gold-plated pads
- ▶ Metal lid, seam sealed

Composition



This product is lead-free, and is fully compliant with the RoHS directive 2011/65/EC



Packaging & Handling

Production quantities supplied on T&R, 3k pcs per reel.
Small quantities may be supplied on tape (no reel), or in bulk.

Marking

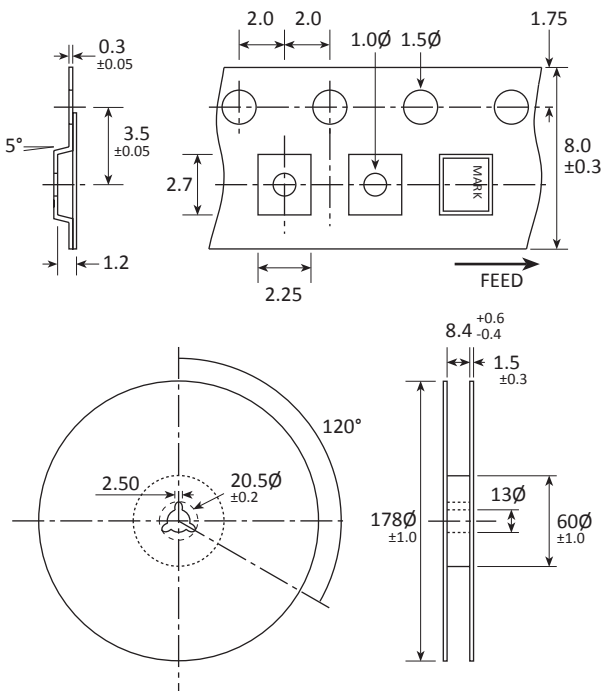
FREQUENCY
T DC

Marking type: Laser
DC = Date code in WY, as shown below
Example: "dJ" = 2013 week 30

Year	2013	2014	2015	2016
	2017	2018	2019	2020
Code	J	J	J	J

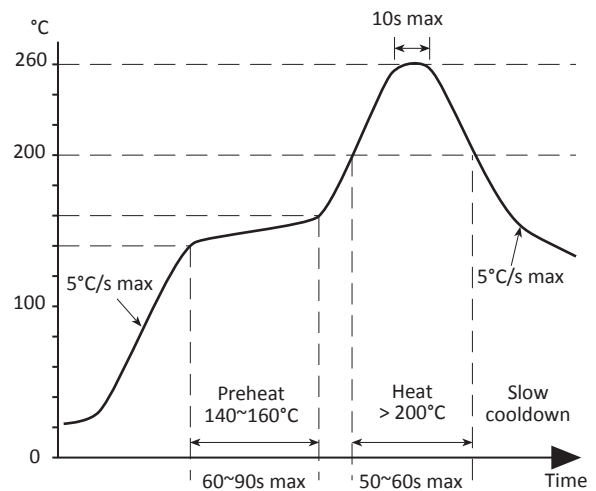
Week codes:
A ~ Z: weeks 1 to 26
a ~ z: weeks 27 to 52

Tape & Reel Specification

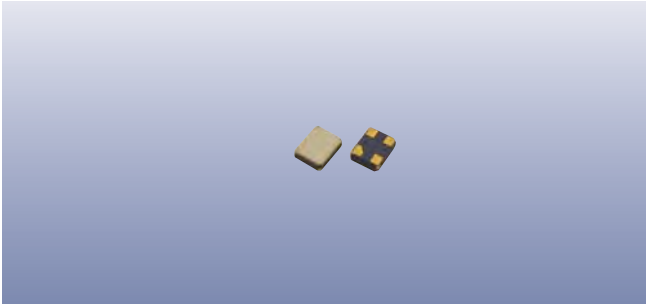


Not to scale. Dimensional tolerances ±0.1mm unless otherwise stated.

Soldering Profile



Maximum solder resistance: 260°C x 10 secs x 2.



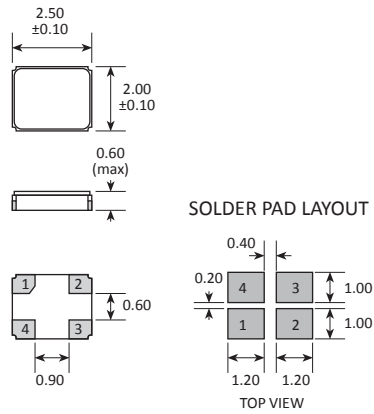
Product Family

GSX-323

Construction

- ▮▮▮▮▮▮ Ceramic body with gold-plated pads
- ▮▮▮▮▮▮ Metal lid, seam sealed

Dimensions (mm)



PAD	CONNECTION
1	Crystal
2	Ground & lid
3	Crystal
4	Ground & lid