

Product Description

Description:	25.0MHz GRX-330/25DMF SM Crystal
Product family:	GRX-330
Category:	SM Quartz Crystal
Order code:	MP10274

Features

- ▶ AEC-Q200 qualified
- ▶ Metal lid can be grounded to minimise EMI
- ▶ Seam sealed for excellent long-term stability
- ▶ Ultra-miniature for maximum space saving

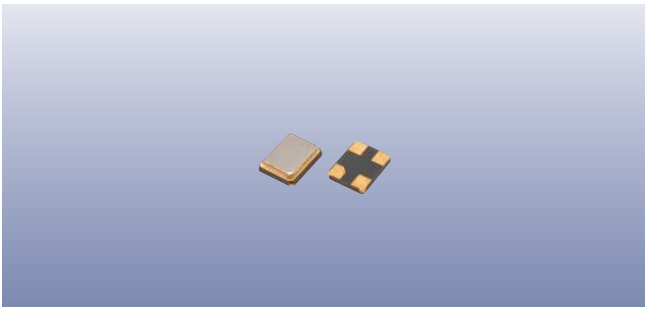
Additional Information

For further information regarding packaging, construction, material composition, soldering profile and environment, please refer to **GRX-330 Product Information sheet**

For dimensions, refer to package drawing: **D0240-A**

Electrical Specifications

Parameter	Value	Notes
Nominal frequency:	25.0MHz	
Calibration tolerance:	±20ppm	@25°C
Temperature stability:	±40ppm ±50ppm	@-40 to 95°C @-40 to 105°C
Operable temperature range:	-40 to +110°C	
Circuit condition:	8pF	
Oscillation mode:	Fundamental	
Equivalent series resistance:	50Ω max	
Ageing:	±5ppm ±10ppm ±20ppm	First year In 5 years In 10 years
Drive level:	10μW typ, 200μW max	
Trim sensitivity:	28ppm/pF	±30%
Static capacitance (C ₀):	1.14pF	±30%
Motional capacitance (C ₁):	4.68fF	±30%
Motional inductance (L ₁):	8.67mH	±30%



Construction

- ▮ Ceramic body with gold-plated pads
- ▮ Metal lid, seam sealed

Composition



This product is lead-free, and is fully compliant with the RoHS directive 2011/65/EU



Packaging & Handling

Production quantities supplied on T&R, 3k pcs per reel.
Small quantities may be supplied on tape (no reel), or in bulk.

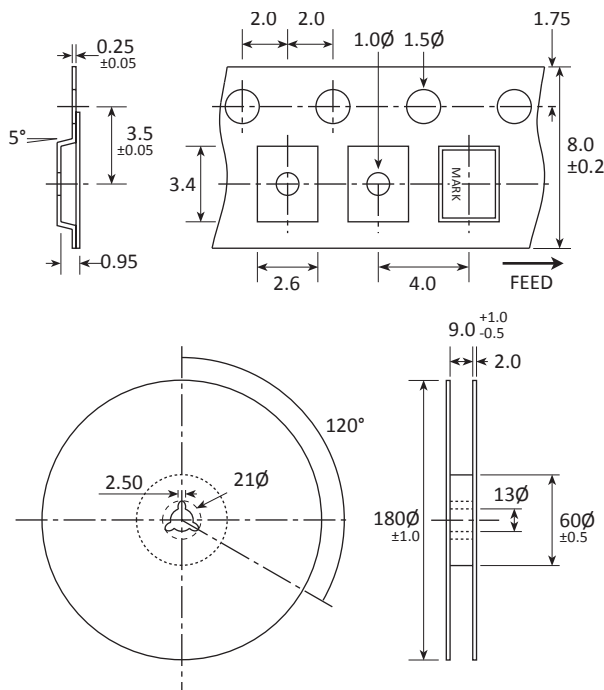
Marking

FREQUENCY
S DC

Marking type: Laser
DC = Date code in YM, eg "DE" = May 2014

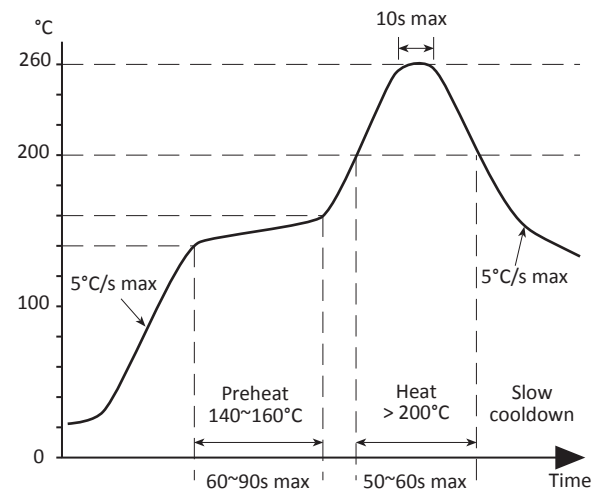
	A	B	C	D	E	F	G	H	J	K	L	M
Y	1	2	3	4	5	6	7	8	9	0		
M	Jan	Feb	Mar	Apr	May	Jun	Jul	Aug	Sep	Oct	Nov	Dec

Tape & Reel Specification

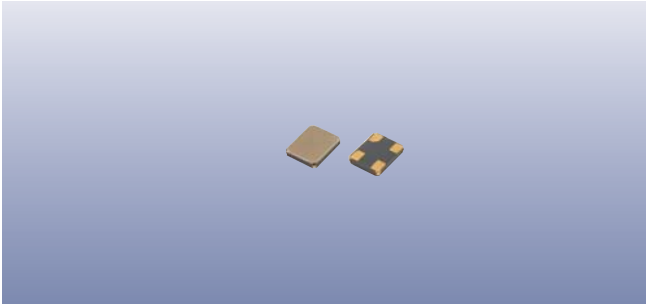


Not to scale. Dimensional tolerances ±0.1mm unless otherwise stated.

Soldering Profile



Maximum solder resistance: 260°C x 10 secs x 2.



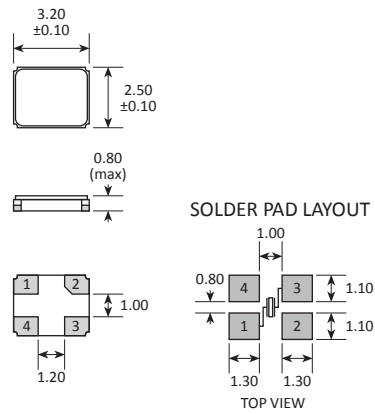
Product Family

GSX-331, GRX-330

Construction

- ▮▮▮▮ Ceramic body with gold-plated pads
- ▮▮▮▮ Metal lid, seam sealed

Dimensions (mm)



PAD	CONNECTION
1	Crystal
2	Ground & lid
3	Crystal
4	Ground & lid