

**360.0MHz IF SAW Filter**  
**Part No: MA03872**

**Model: TB0130A**  
**Rev. No: 2**

**A. MAXIMUM RATING:**

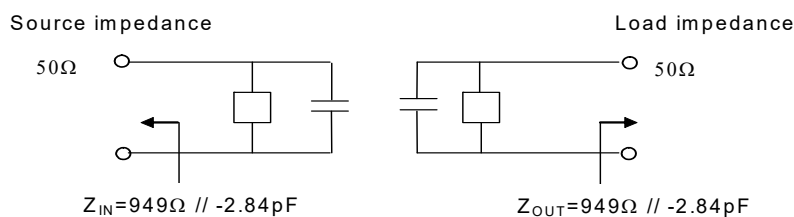
Electrostatic Sensitive Device

1. Input Power Level: 5dBm
2. Operating Temperature: -20°C to 75°C
3. Storage Temperature: -35°C to 85°C
4. Moisture Sensitivity Level: Level 1 (MSL1)

**B. ELECTRICAL CHARACTERISTICS:**

Item	Unit	Min.	Typ.	Max.	Note
Center frequency Fc	MHz	-	360	-	1
Insertion Loss IL	dB	-	4.2	5.0	1
Passband Ripple in Fc±67.7kHz	dB	-	0.4	1.5	1
Group delay ripple in Fc±67.76kHz GD	µs	-	0.5	2.0	1
Attenuation:(Reference level from Min IL)					
Fc ±0.4 to Fc ±0.6MHz	dB	29	40	-	
Fc ±0.6 to Fc ±0.8MHz	dB	42	70	-	
Fc -0.8 to Fc -3.0MHz	dB	50	61	-	
Fc -3.0 to Fc -57MHz	dB	52	62	-	
Fc - 57 to Fc -77MHz	dB	49	69	-	
Fc - 77 to Fc -115MHz	dB	52	69	-	
Fc +0.8 to Fc +1.6MHz	dB	50	61	-	
Fc +1.6 to Fc + 3.0MHz	dB	45	65	-	
Fc +3.0 to Fc +115MHz	dB	52	58	-	

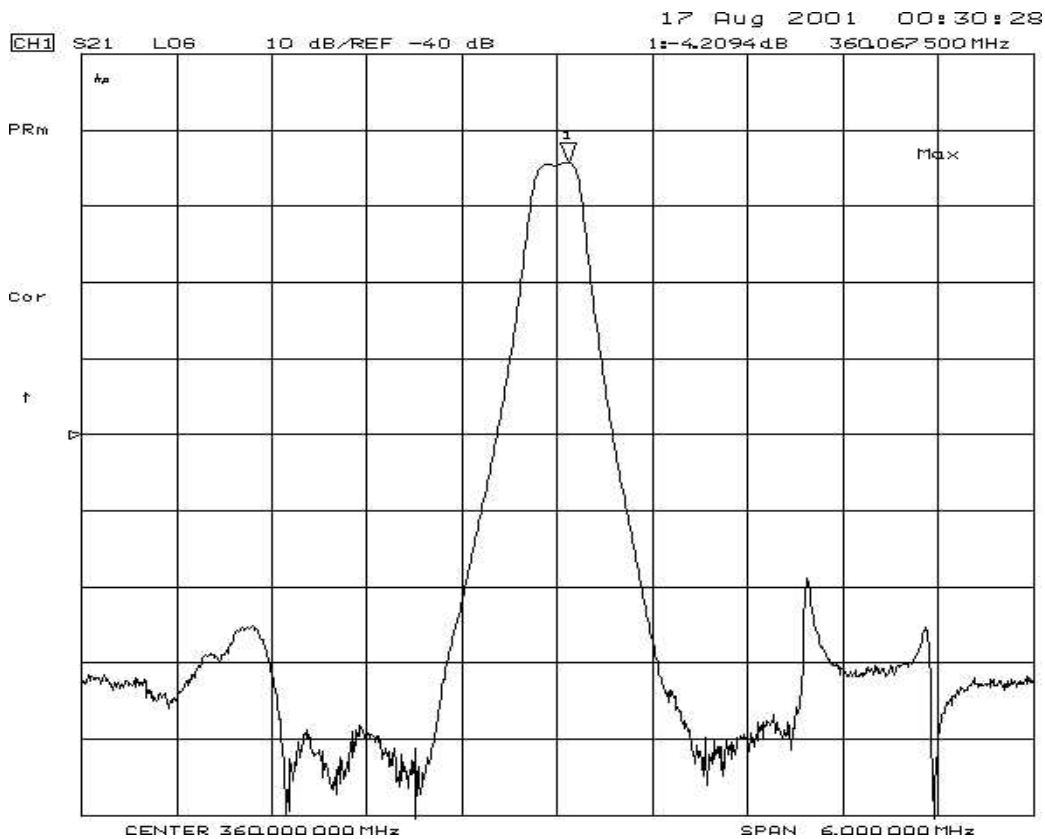
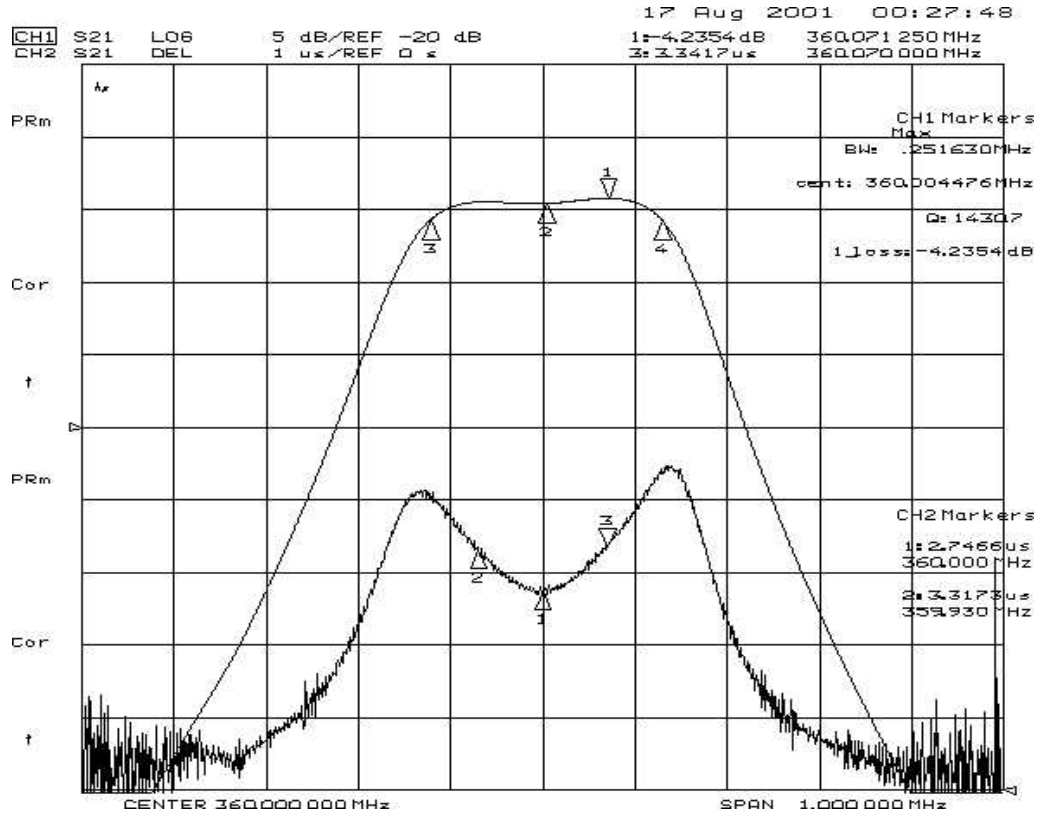
Note1. The standard definitions is in JIS C 6703



**360.0MHz IF SAW Filter**  
**Part No: MA03872**

**Model: TB0130A**  
**Rev. No: 2**

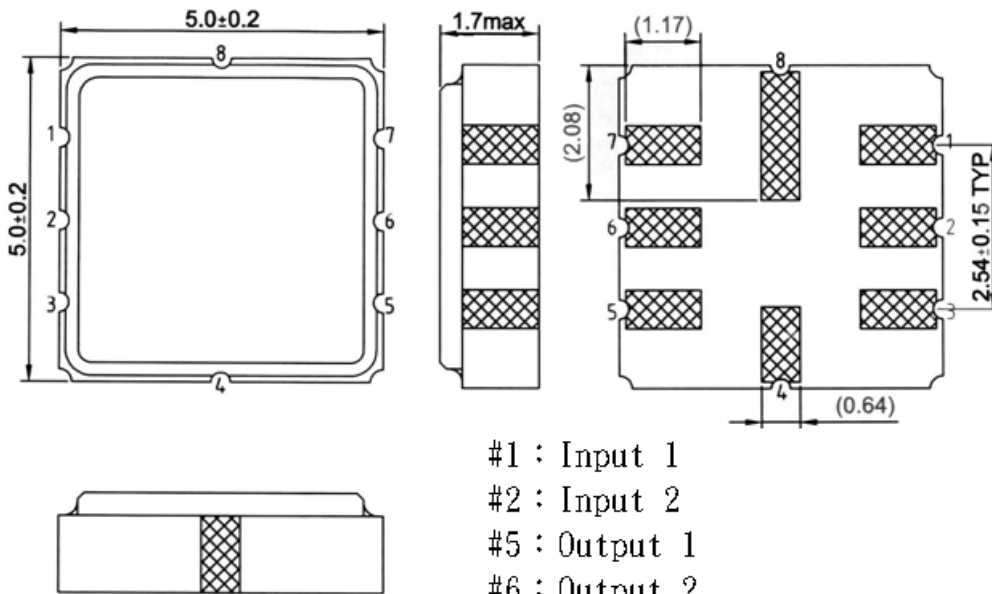
**C. FREQUENCY CHARACTERISTICS:**



**360.0MHz IF SAW Filter**  
**Part No: MA03872**

**Model: TB0130A**  
**Rev. No: 2**

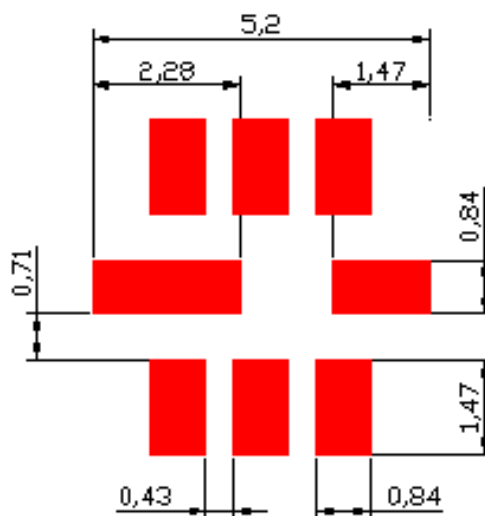
**D. OUTLINE DRAWING:**



- #1 : Input 1
- #2 : Input 2
- #5 : Output 1
- #6 : Output 2
- #3 、 4 、 7 、 8 : Ground

Unit : mm

**E. PCB FOOTPRINT:**



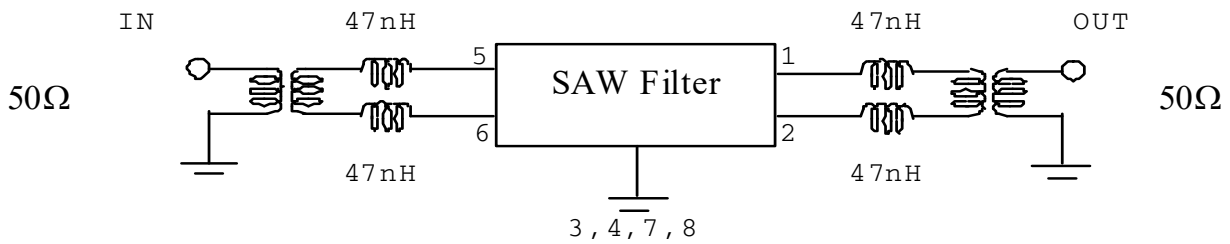
**360.0MHz IF SAW Filter**  
**Part No: MA03872**

**Model: TB0130A**  
**Rev. No: 2**

**F. MEASUREMENT CIRCUIT:**

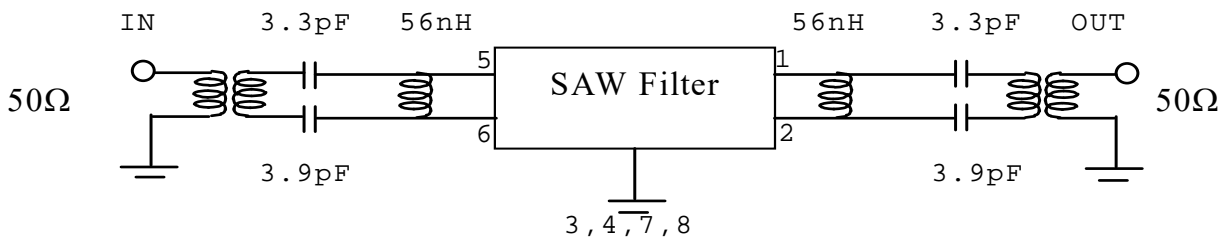
1. 50Ohm Test circuit

HP Network analyzer



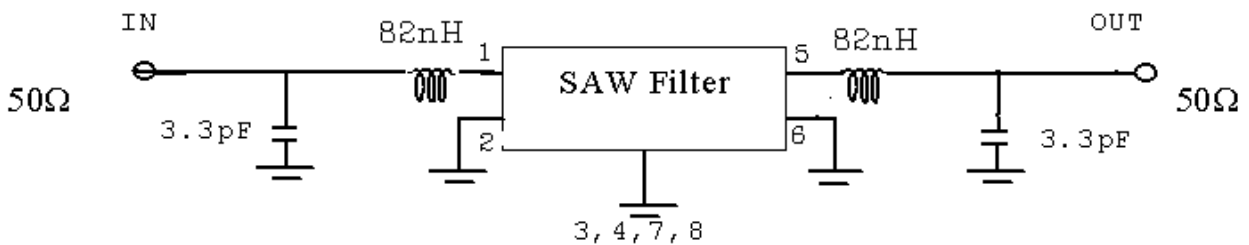
2. 50Ohm Test circuit

HP Network analyzer



3. 50Ohm Test circuit

HP Network analyzer

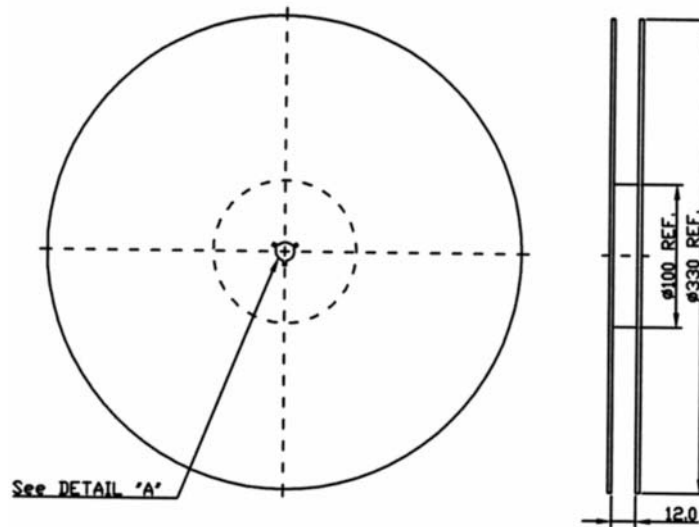


**360.0MHz IF SAW Filter**  
**Part No: MA03872**

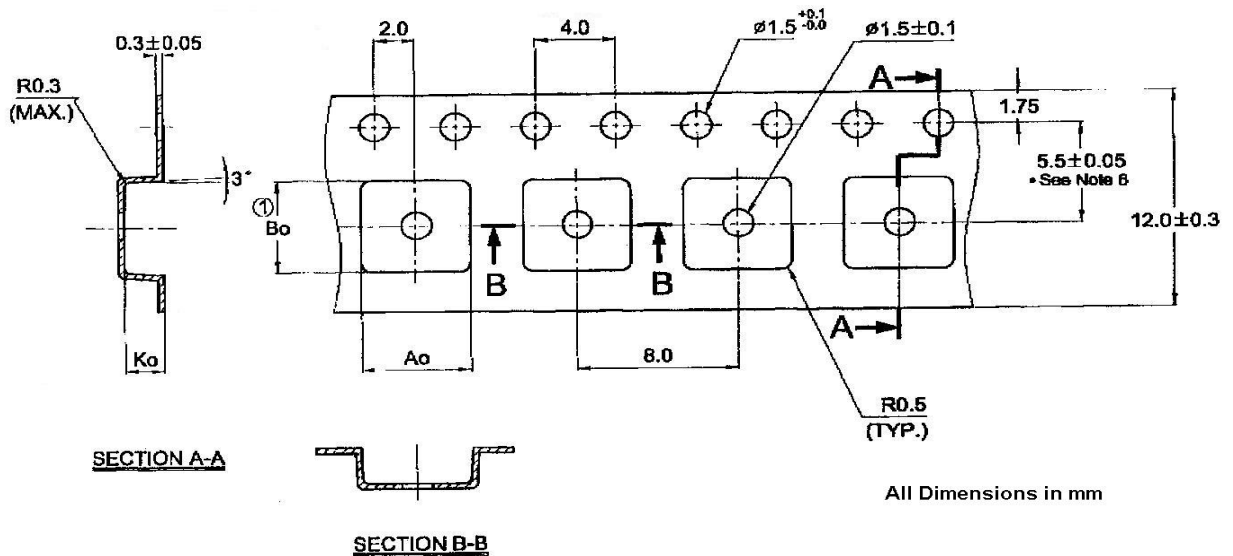
**Model: TB0130A**  
**Rev. No: 2**

**G. PACKING:**

1. Reel Dimension



2. Tape Dimension



$A_o = 5.30 \pm 1 \text{ mm}$   
 $B_o = 5.30 + 0.2 / - 0.0 \text{ mm}$   
 $K_o = 2.0 \pm 0.1 \text{ mm}$

**360.0MHz IF SAW Filter**  
**Part No: MA03872**

**Model: TB0130A**  
**Rev. No: 2**

**H. RECOMMENDED REFLOW PROFILE:**

1. Preheating shall be fixed at 150~180°C for 60~90 seconds.
2. Ascending time to preheating temperature 150°C shall be 30 seconds min.
3. Heating shall be fixed at 220°C for 50~80 seconds and at 260°C+0/-5°C peak (20~40 sec).
4. Time: 2 times.

