

SAW Resonator 434.42 MHz
Part No: MA05199

Model: TC434ED-A
REV NO.: 2

A. FEATURES:

- 1-Port Resonator.

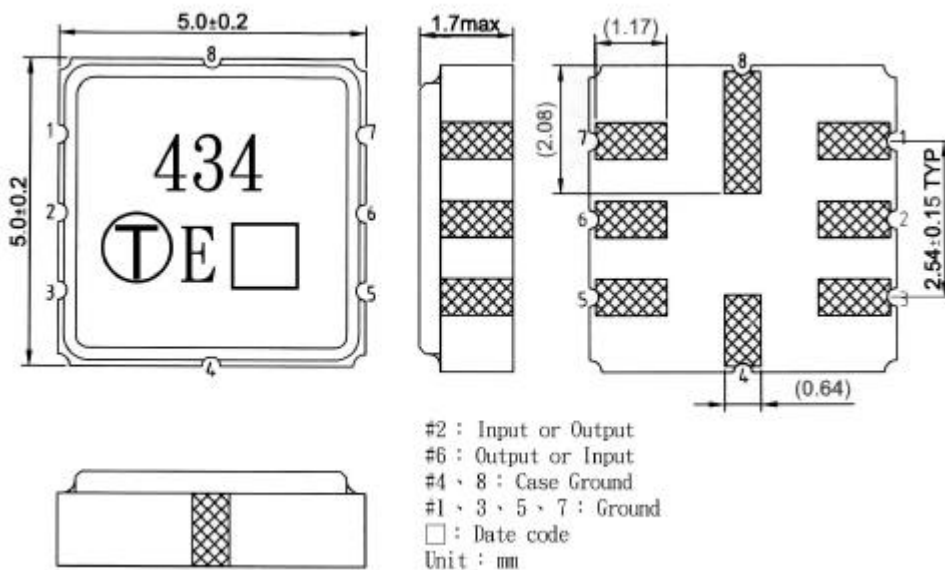
B. MAXIMUM RATING:

1. Input Power Level: 0 dBm
2. DC voltage: 12 V
3. Operating Temperature: -40°C to +85°C
4. Storage Temperature: -40°C to +85°C

C. ELECTRICAL CHARACTERISTICS:

| Characteristic | Units | Minimum | Typical | Maximum |
|--------------------------------|----------------|--------------|---------|---------|
| Center frequency Fr | MHz | 434.345 | 434.42 | 434.495 |
| Insertion Loss IL | dB | - | 1.0 | 2.0 |
| Unloaded Quality factor | | - | 14500 | - |
| Equivalent Elements | | | | |
| Motional capacitance C1 | fF | - | 1.8 | - |
| Motional inductance L1 | H | - | 73 | - |
| Motional resistance R1 | Ohm | - | 13 | 23 |
| Parallel capacitance Co | pF | - | 3.0 | - |
| Temp. coeff. | ppm/c*2 | - | 0.032 | - |
| Turnover To | deg.C | 10 | 25 | 40 |
| Package size | | SMD5X5X1.7mm | | |

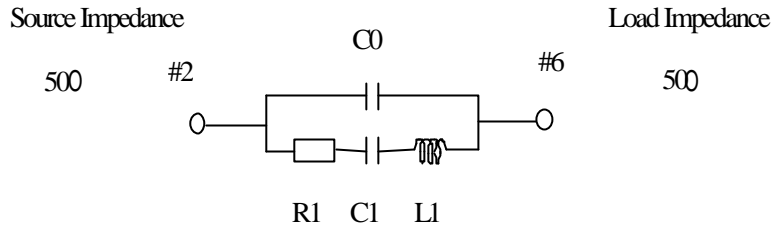
D. OUTLINE DRAWING:



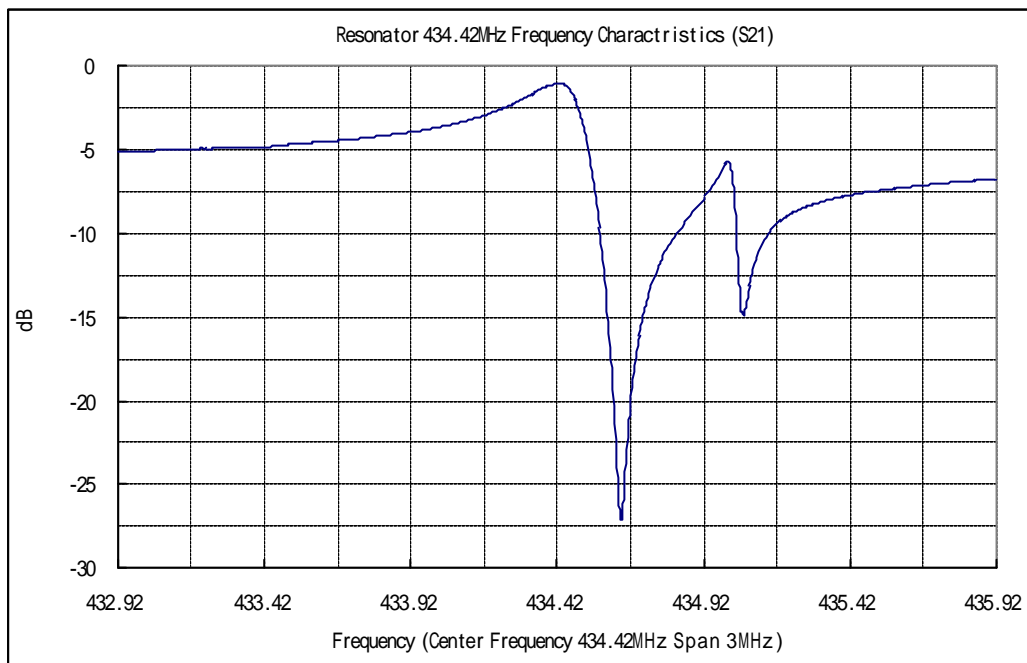
SAW Resonator 434.42 MHz
Part No: MA05199

Model: TC434ED-A
REV NO.: 2

E. EQUIVALENT CIRCUIT:
 One-Port Resonator:

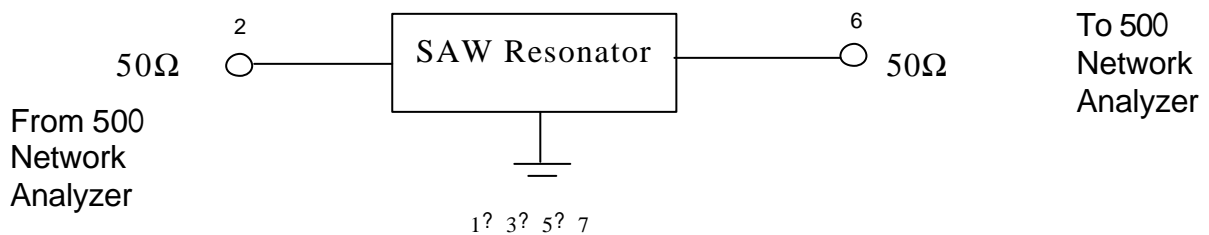


F. FREQUENCY CHARACTERISTICS:



G. TEST CIRCUIT:

Network analyzer

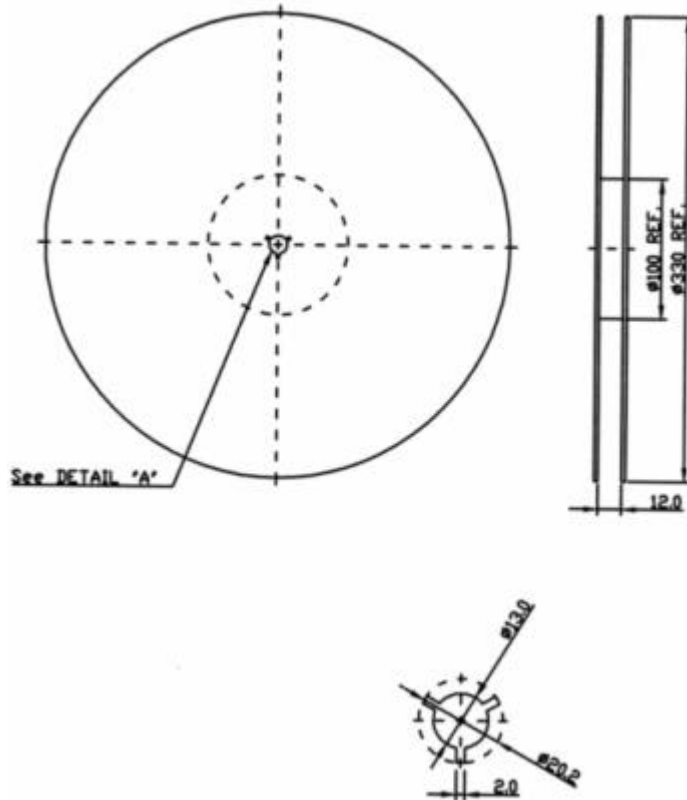


SAW Resonator 434.42 MHz
Part No: MA05199

Model: TC434ED-A
REV NO.: 2

H. PACKING:

1. REEL DIMENSION



2. TAPE DIMENSION

