

SAW Resonator 403.550MHz
Part No: MP01568

Model: TC0272A
Rev No: 1

A. FEATURES:

One-Port Resonator

B. MAXIMUM RATING:

1. Input Power Level: 0dBm
2. DC voltage: 12V
3. Operating Temperature: -40°C to +85°C
4. Storage Temperature: -40°C to +85°C

C. ELECTRICAL CHARACTERISTICS:

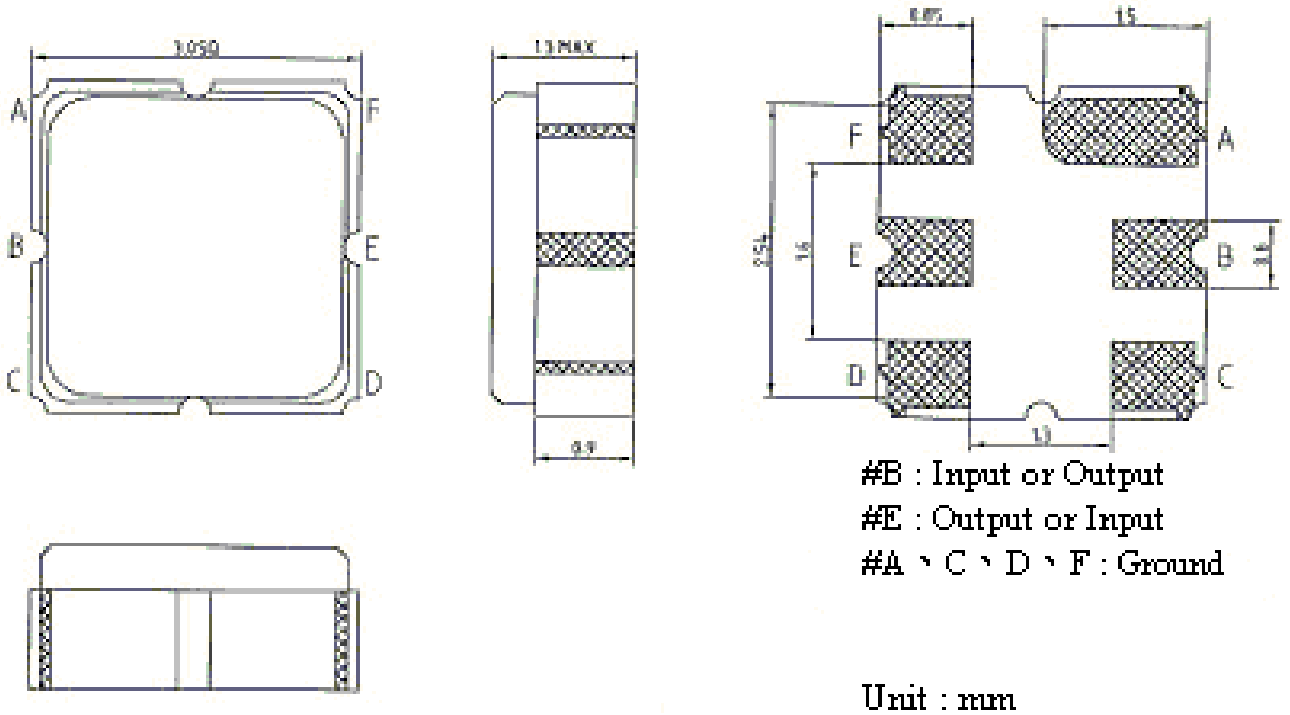
Characteristics	Units	Min.	Typ.	Max.
Center frequency Fc	MHz	403.475	403.550	403.625
Insertion Loss IL	dB	-	0.8	2.0
Equivalent Elements				
Motional capacitance C1	fF	-	3.7	-
Motional inductance L1	µH	-	41	-
Motional resistance R1	Ohm	-	11	-
Parallel capacitance Co	pF	-	5.1	-
Temp. coeff.	ppm/c*2	-	0.032	-
Turnover To	deg. C	10	25	40
Package size	SMD 3 X 3 X 1.1mm			

Temperature dependence of fc: $f_c(T_A) = f_c(T_O) (1 + TC_f(T_A - T_O)^2)$

SAW Resonator 403.550MHz
Part No: MP01568

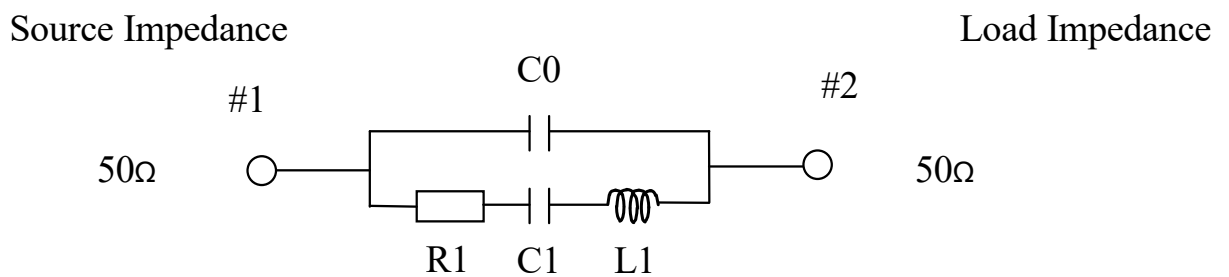
Model: TC0272A
Rev No: 1

D. OUTLINE DRAWING:



E. EQUIVALENT CIRCUIT:

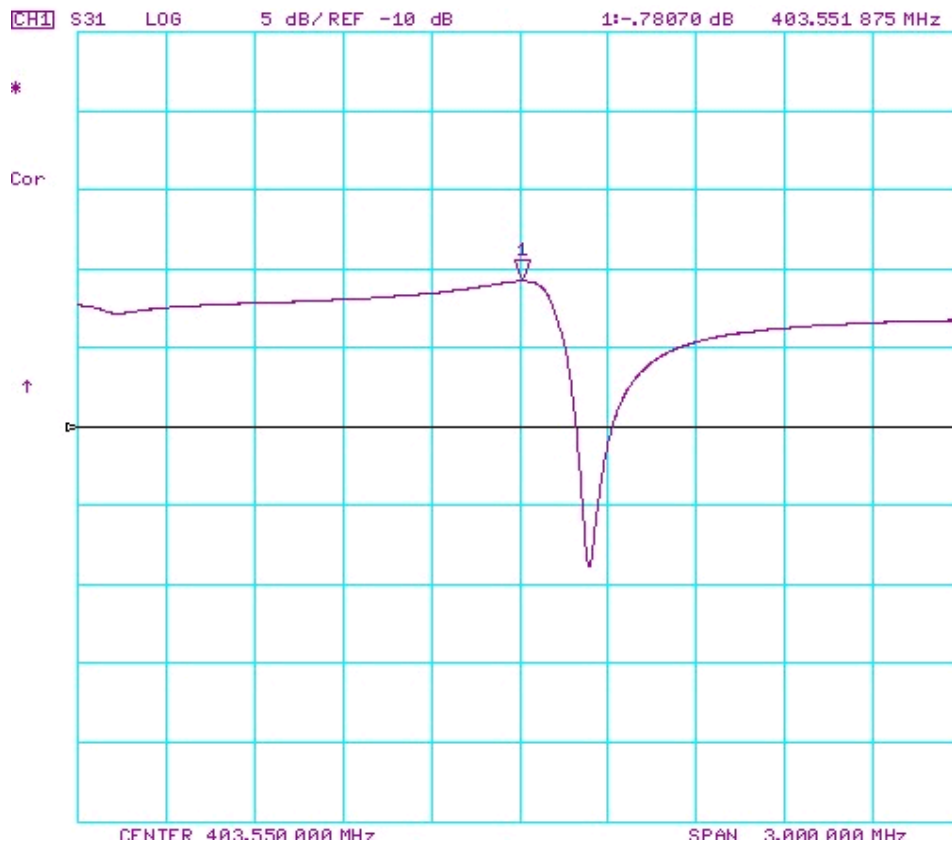
One-Port Resonator:



SAW Resonator 403.550MHz
Part No: MP01568

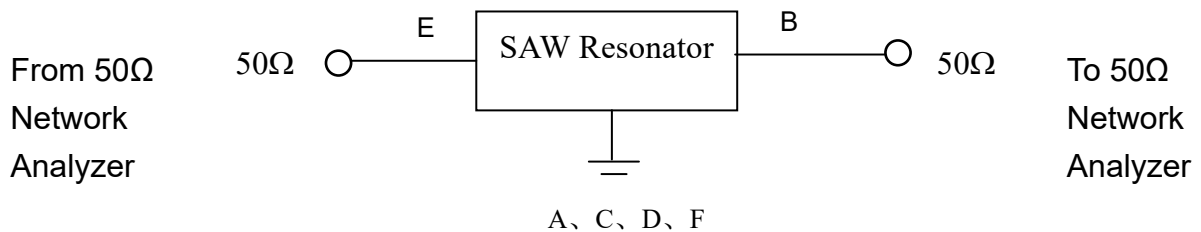
Model: TC0272A
Rev No: 1

F. FREQUENCY CHARACTERISTICS:



G. TEST CIRCUIT:

Network analyzer

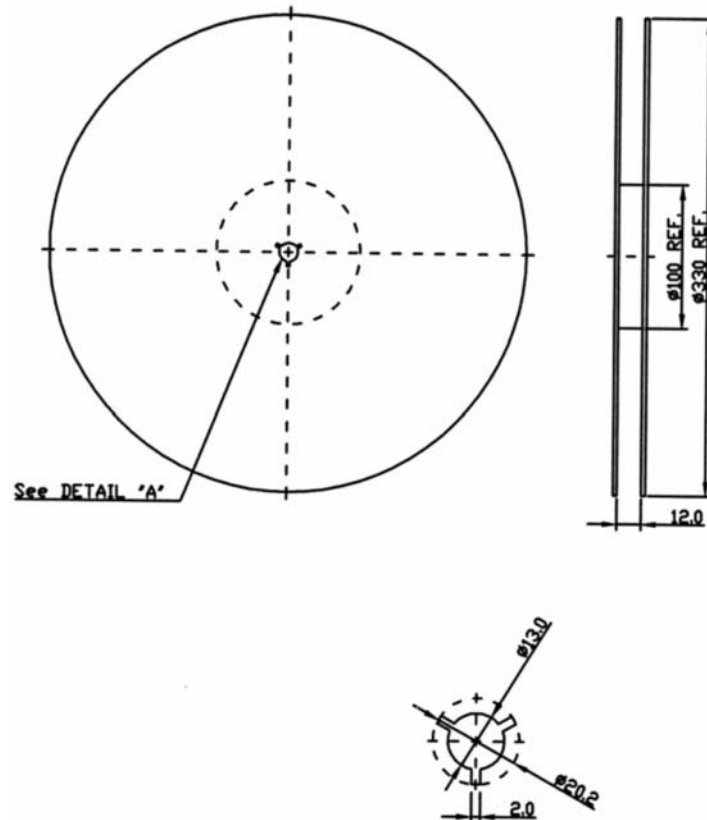


SAW Resonator 403.550MHz
Part No: MP01568

Model: TC0272A
Rev No: 1

H. PACKING:

1. Reel Dimensions



2. Tape Dimensions

