

**SAW Filter 46.30MHz**  
**Part No: MP05680**

**Model: TB1124A**  
**Rev No: 1**

**A. MAXIMUM RATING:**

Electrostatic Sensitive Device

1. Operating temperature range: -55°C to 85°C
2. Storage temperature range: -55°C to 85°C
3. Input Power Level: 10 dBm
4. Maximum DC Voltage: 10V

**B. CHARACTERISTICS:**

Item	Unit	Min.	Typ.	Max.
Center frequency Fc	MHz	-	46.3	-
Insertion Loss IL	dB	-	19.5	24.0
3dB Bandwidth	MHz	21.0	22.1	-
35dB Bandwidth	MHz	-	27	-
Passband Ripple Fc ± 9.0MHz	dB	-	0.7	1.5
Absolute group Delay	us	-	0.75	-
Group Delay variation Fc ± 9.0MHz	ns	-	75	-
Attenuation (Reference level from minimum Insertion loss )				
62.3MHz ~ 82.3MHz	dB	22	28	-
82.3MHz ~ 150MHz	dB	30	35	-
150MHz ~ 500MHz	dB	40	50	-
Temperature Coefficient	ppm/°C	-	-94	-
Source Impedance	Ohm	-	200	-
Load Impedance	Ohm	-	200	-

**SAW Filter 46.30MHz**  
**Part No: MP05680**

**Model: TB1124A**  
**Rev No: 1**

**C. FREQUENCY CHARACTERISTICS:**

1. Wide band Response:

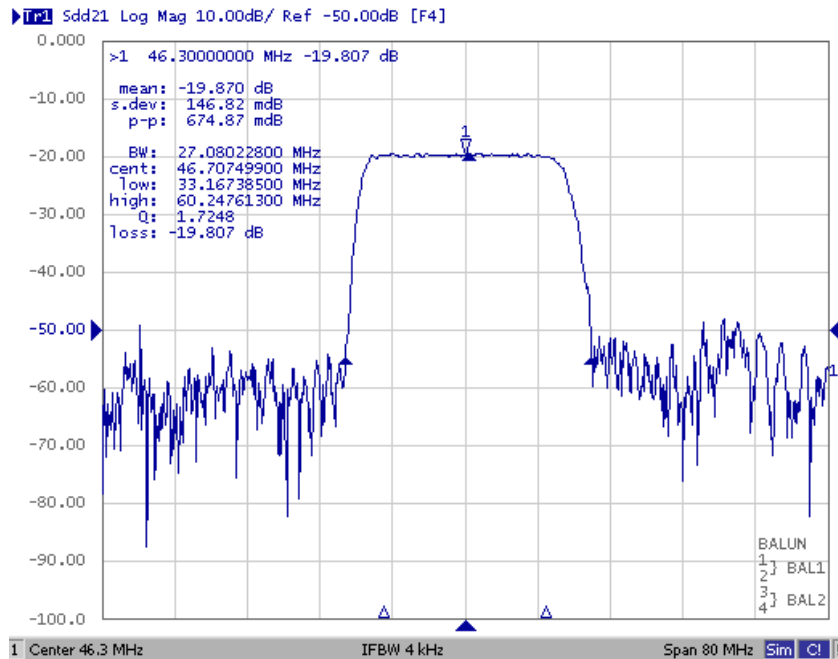


Fig. 1: Horizontal: 8MHz / Div, Vertical: 10dB / Div

2. Pass band Response and Group Delay Response:

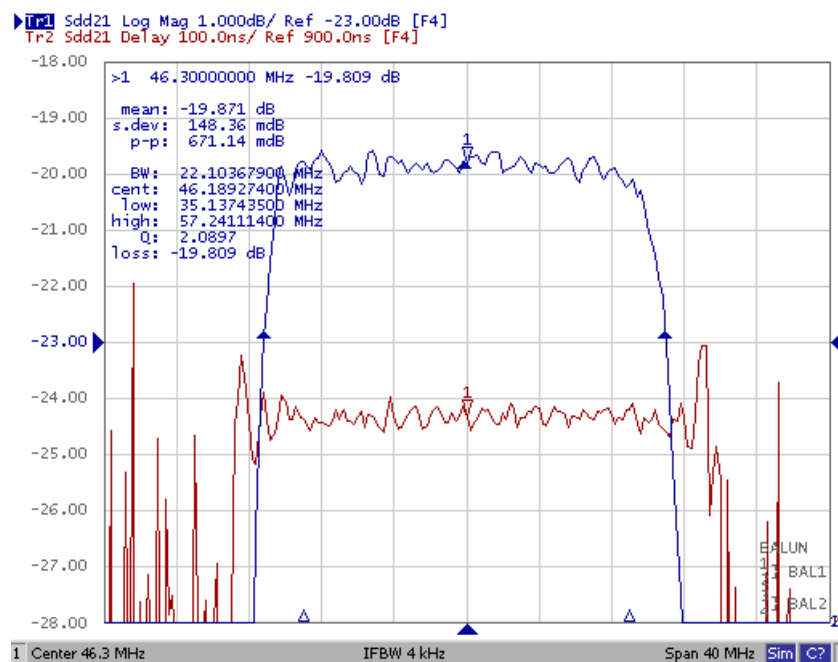


Fig. 2: Horizontal: 4MHz / Div, Vertical: 1dB / Div, Vertical: 100ns / Div

**SAW Filter 46.30MHz**  
**Part No: MP05680**

**Model: TB1124A**  
**Rev No: 1**

3. Wide band Response:

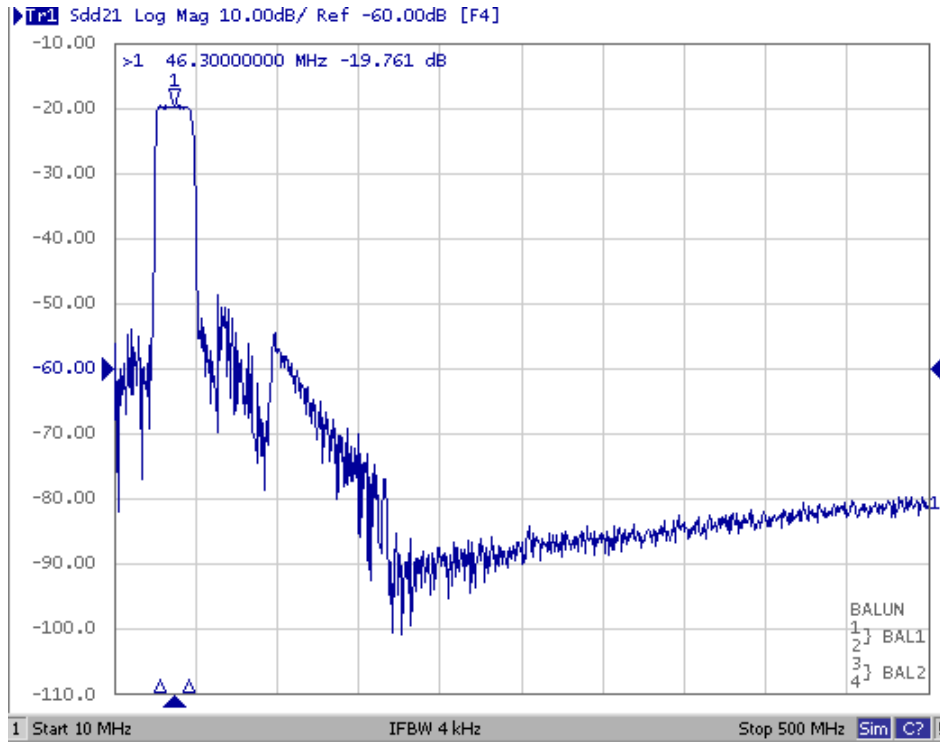
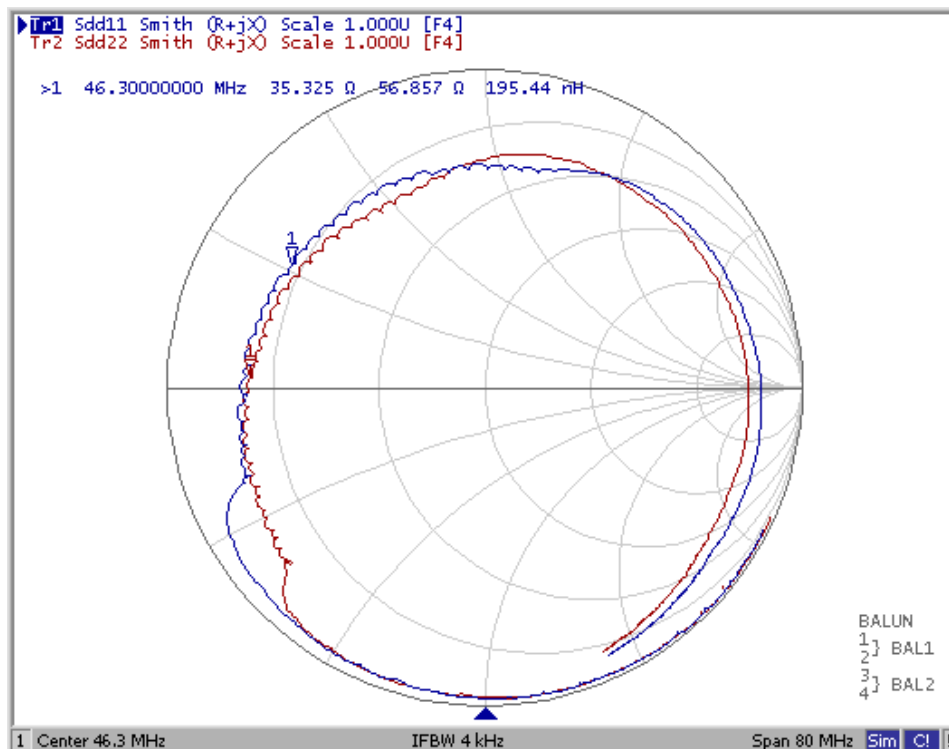


Fig. 3: Horizontal: 50MHz / Div, Vertical: 10dB / Div

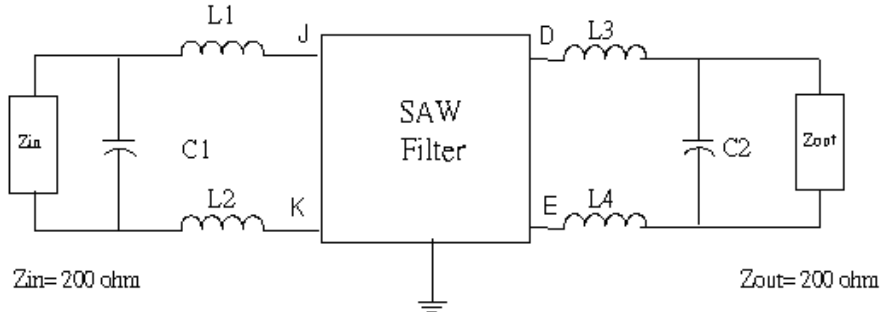
4. Smith Chart:



**SAW Filter 46.30MHz**  
**Part No: MP05680**

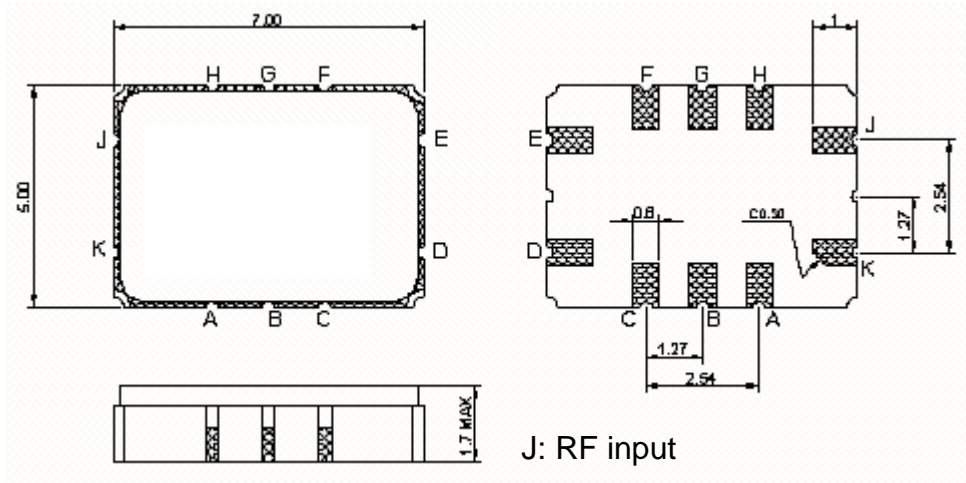
**Model: TB1124A**  
**Rev No: 1**

**D. MATCHING CIRCUIT:**



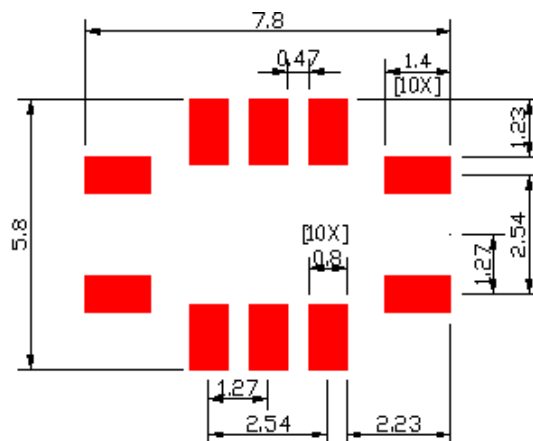
$$L1 = L2 = L3 = L4 = 390\text{nH} \quad C1 = C2 = 10\text{pF}$$

**E. OUTLINE DRAWING:**



- J: RF input
  - K: RF balance input or to be ground
  - D: RF output
  - E: RF balance output or to be ground
  - A, B, C, F, G, H: Ground
- Unit: mm

**F. PCB FOOTPRINT:**

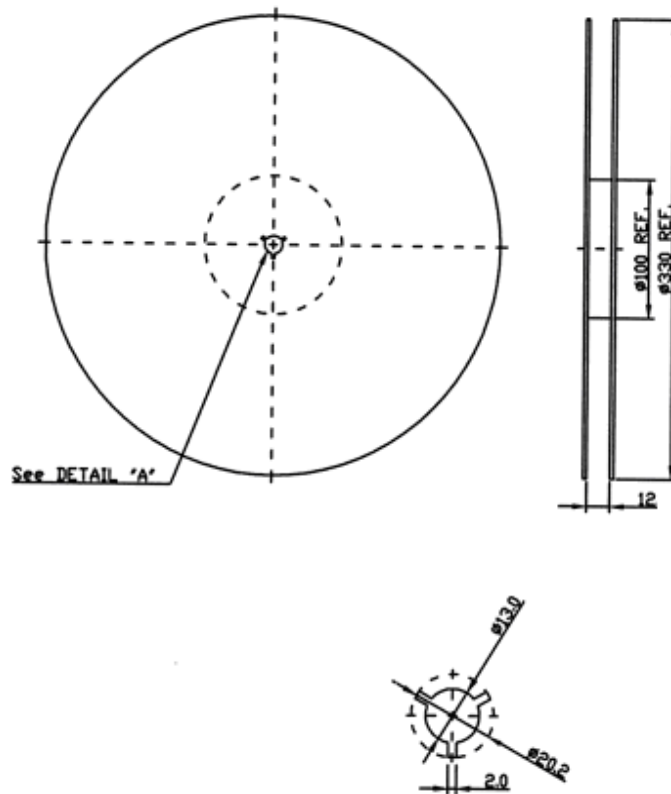


**SAW Filter 46.30MHz**  
**Part No: MP05680**

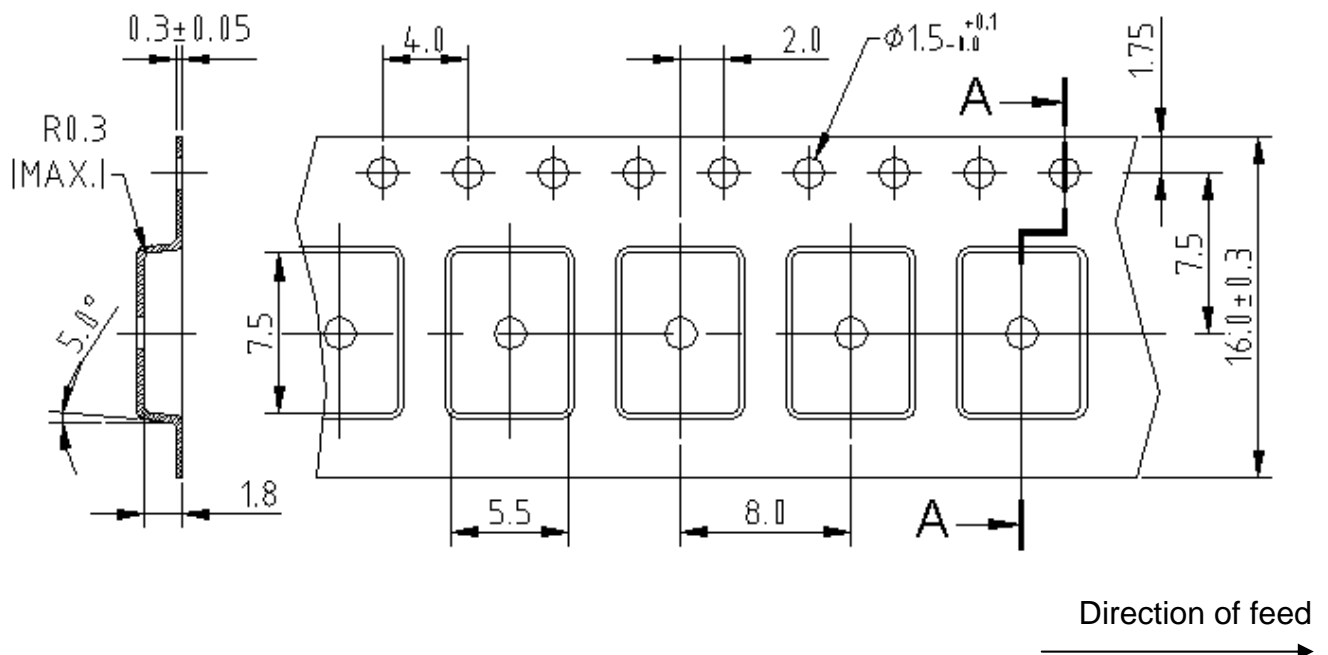
**Model: TB1124A**  
**Rev No: 1**

**G. PACKING:**

1. Reel Dimension (Please refer to FR-75D10 for packing quantity)



2. Tape Dimension



**SAW Filter 46.30MHz**  
**Part No: MP05680**

**Model: TB1124A**  
**Rev No: 1**

**H. RECOMMENDED REFLOW PROFILE:**

