

SAW Filter: 140MHz
Part No: MP02233

Model: TB0541A
Rev No: 1

A. MAXIMUM RATING:

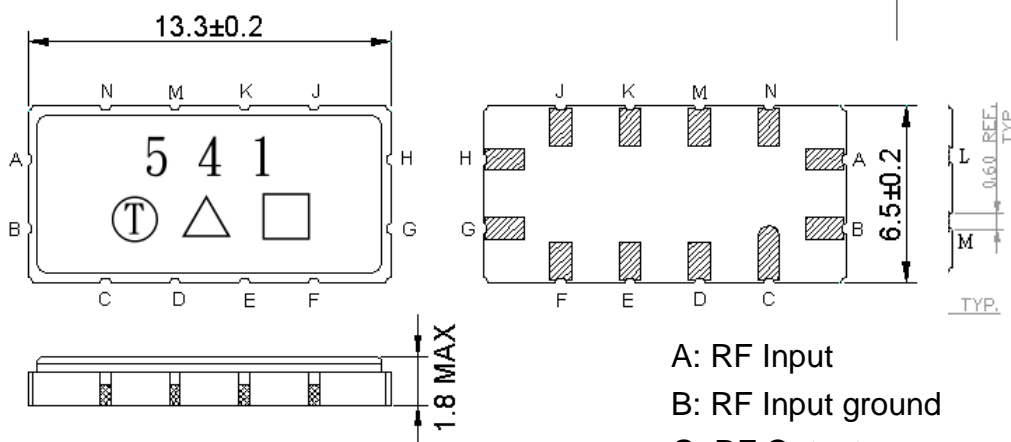
1. Operating Temperature: -40°C ~ +85°C
2. Storage Temperature: -40°C ~ +85°C
3. Input Power Level: 10dBm

B. CHARACTERISTICS:

Ambient Temperature: 25°C

Characteristics	Value			Note
	Min.	Typ.	Max.	
Center frequency Fc MHz	139.6	140	140.4	-
Maximum Insertion loss IL dB	-	6.8	7.5	-
1dB Bandwidth MHz	5.80	5.95	-	-
3dB Bandwidth MHz	6.85	6.97	-	-
40dB Bandwidth MHz	-	10.40	11.10	-
Passband Ripple (Fc ± 2.4MHz) MHz	-	0.40	1.00	-
Phase Linearity (Fc ± 2.4MHz) (P-P) deg	-	3.6	14	-
Group Delay Ripple (Fc ± 2.4MHz) nS	-	60	200	-
Group Delay at Fc uS	-	0.94	-	-
Temp Coefficient ppm/°C	-	-18	-	-

C. OUTLINE DRAWING:



- A: RF Input
 - B: RF Input ground
 - G: RF Output
 - H: RF Output ground
 - C, D, E, F, J, K, M, N: To be ground
- Unit: mm

SAW Filter: 140MHz
Part No: MP02233

Model: TB0541A
Rev No: 1

D. FREQUENCY CHARACTERISTICS:

1. S21 Response

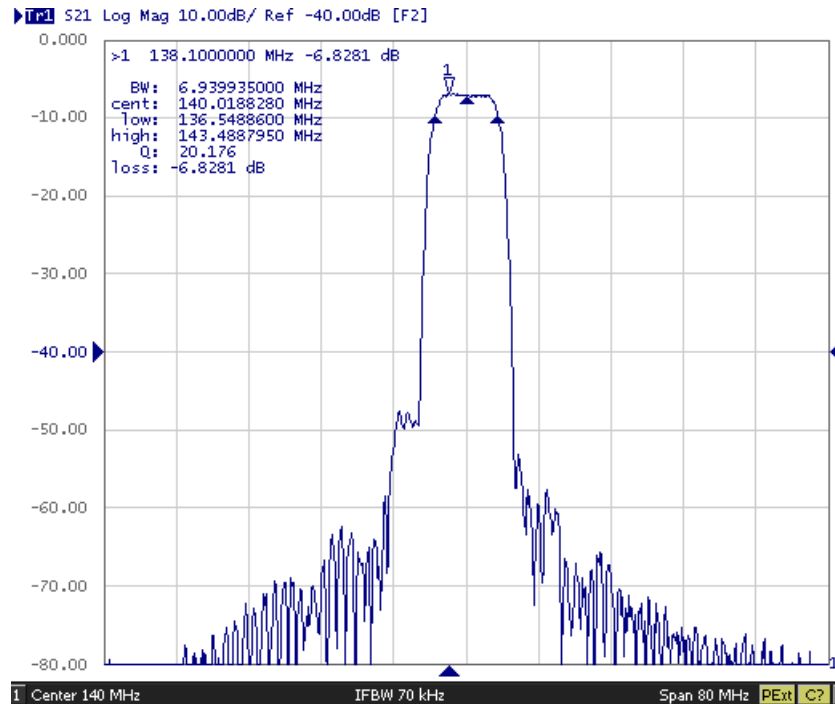


Fig. 1. Horizontal: 8MHz/Div Vertical: 10dB/Div

2. Pass band Ripple and Group Delay Ripple

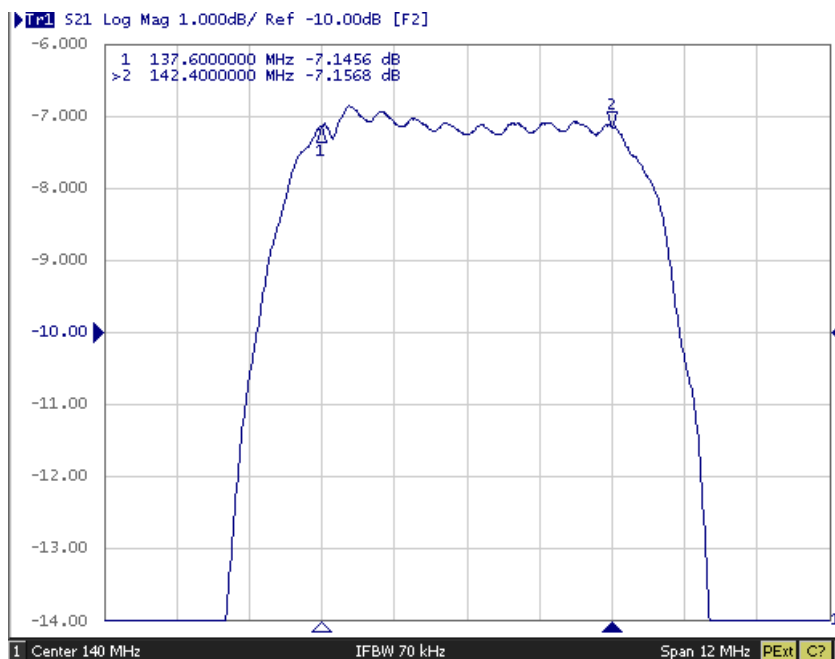


Fig. 2. Horizontal: 1.2MHz/Div Vertical: 1dB/Div

SAW Filter: 140MHz
Part No: MP02233

Model: TB0541A
Rev No: 1

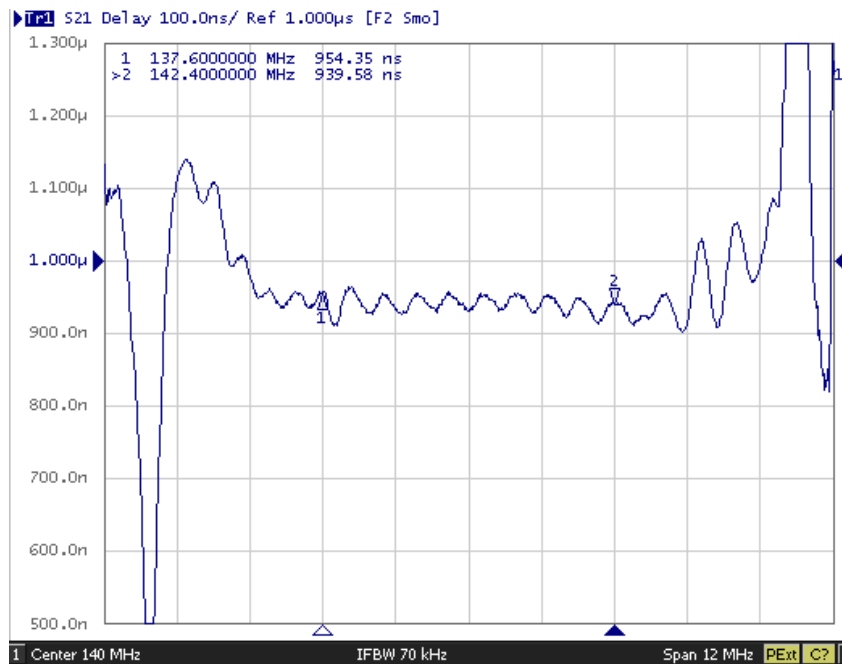
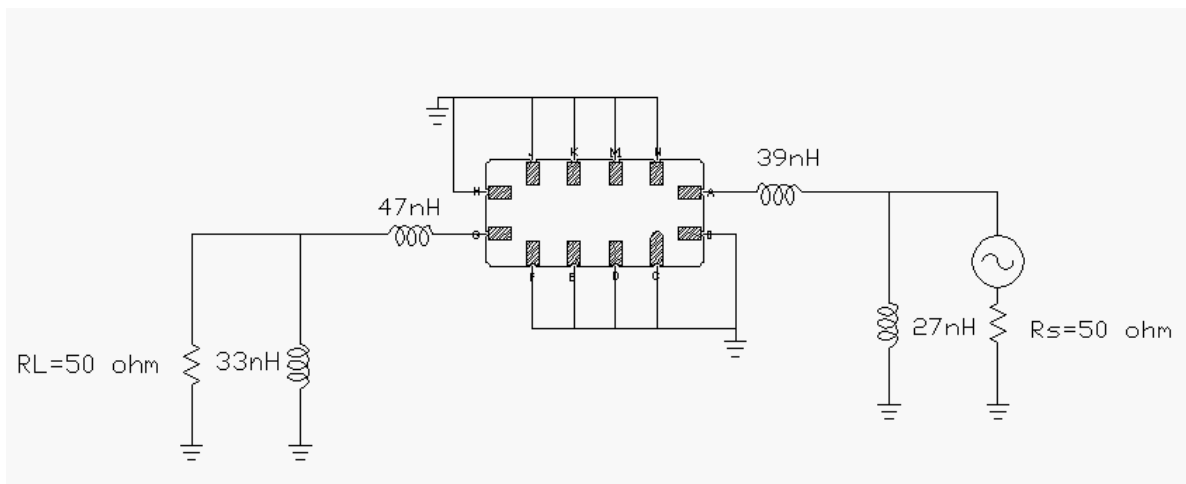
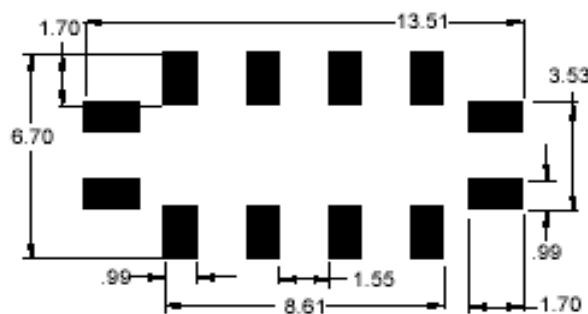


Fig. 3. Horizontal: 1.2MHz/Div Vertical: 100nS/Div

E. TEST FIXTURE:



F. PCB FOOTPRINT:

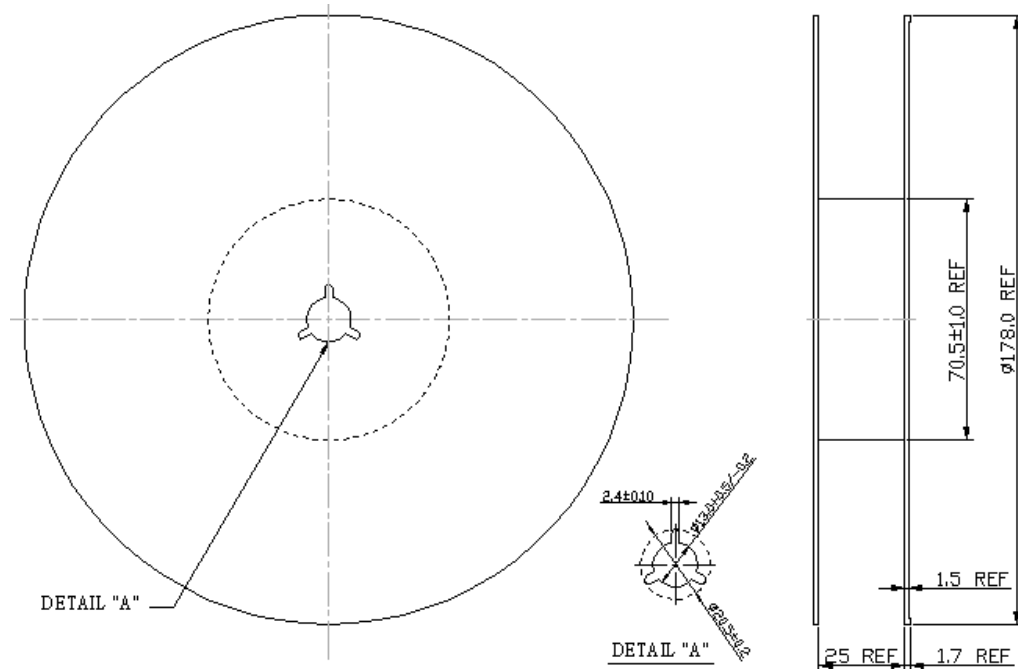


SAW Filter: 140MHz
Part No: MP02233

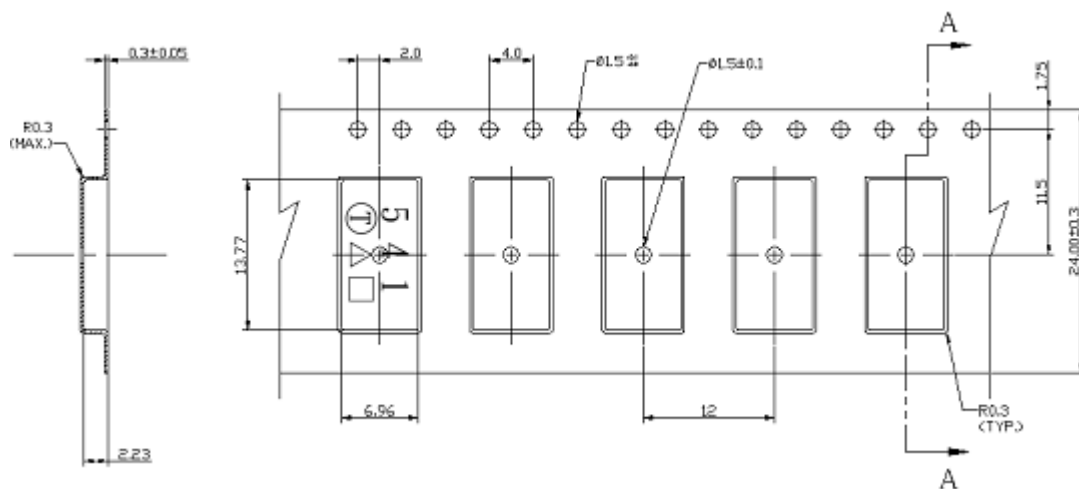
Model: TB0541A
Rev No: 1

G. PACKING:

1. REEL DIMENSION



2. TAPE DIMENSION



Direction of Feed