

**250MHz SAW Filter**

**Model: TA0998A**

**Part No: MP02018**

**REV NO.: 1**

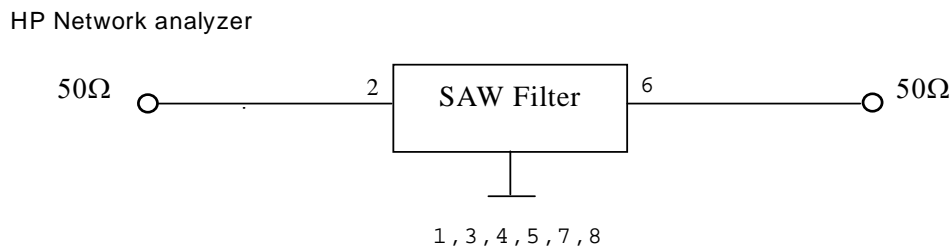
**A. MAXIMUM RATING:**

1. Input Power Level: 10 dBm
2. DC voltage: 5 V
3. Operating Temperature: : -40°C to +85°C
4. Storage Temperature: -40°C to +85°C

**B. ELECTRICAL CHARACTERISTICS:**

| Item                                    |     | Min. | Typ. | Max. |     |
|---|-----|------|------|------|-----|
| Center frequency                        | Fc  | MHz  | -    | 250  | -   |
| Insertion loss (249.9 ~ 250.9MHz)       | IL  | dB   | -    | 2.05 | 3.8 |
| Amplitude ripple (249.9 ~ 250.9MHz)     |     | dB   | -    | 0.13 | 1.8 |
| Attenuation (Reference level from 0 dB) |     |      |      |      |     |
| Fc-100 ~ Fc-40                          | MHz | dB   | 45   | 66   | -   |
| Fc-40 ~ Fc-400                          | MHz | dB   | 43   | 58   | -   |
| Fc-400 ~ Fc-450                         | MHz | dB   | 40   | 63   | -   |
| Source impedance                        | Zs  | Ω    | -    | 50   | -   |
| Load impedance                          | ZL  | Ω    | -    | 50   | -   |

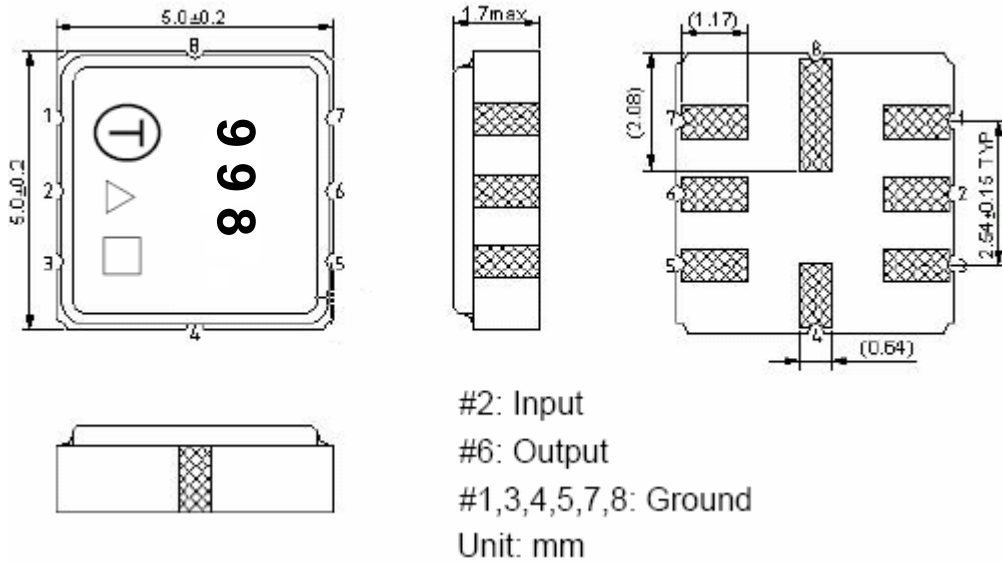
**C. MEASUREMENT CIRCUIT:**



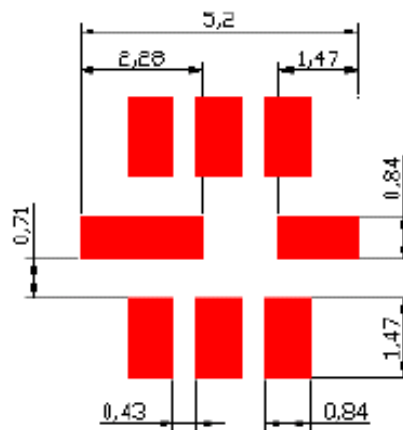
**250MHz SAW Filter**  
Part No: **MP02018**

Model: **TA0998A**  
REV NO.: 1

**D. OUTLINE DRAWING:**



**E. PCB FOOTPRINT**

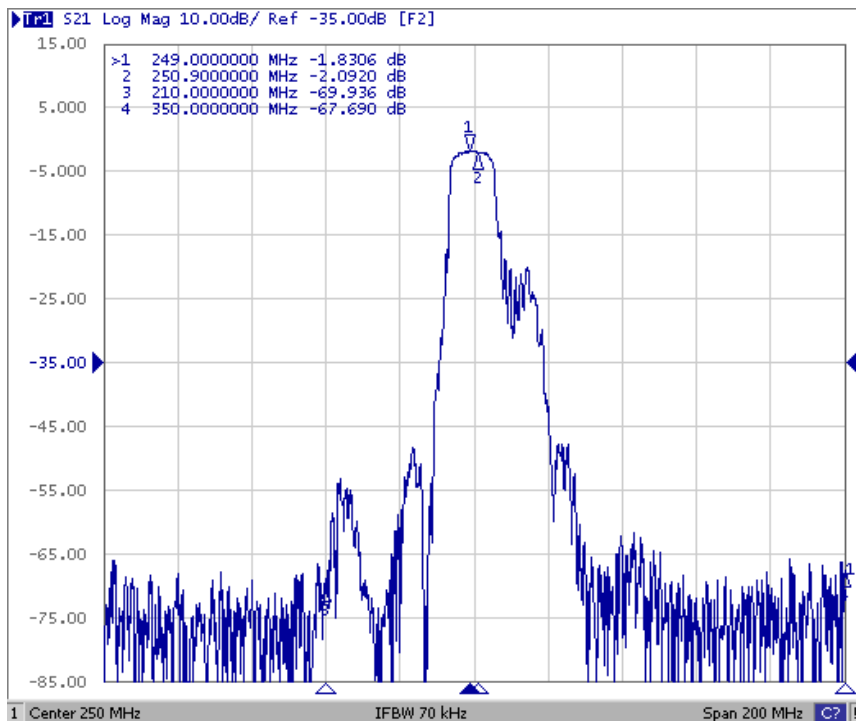
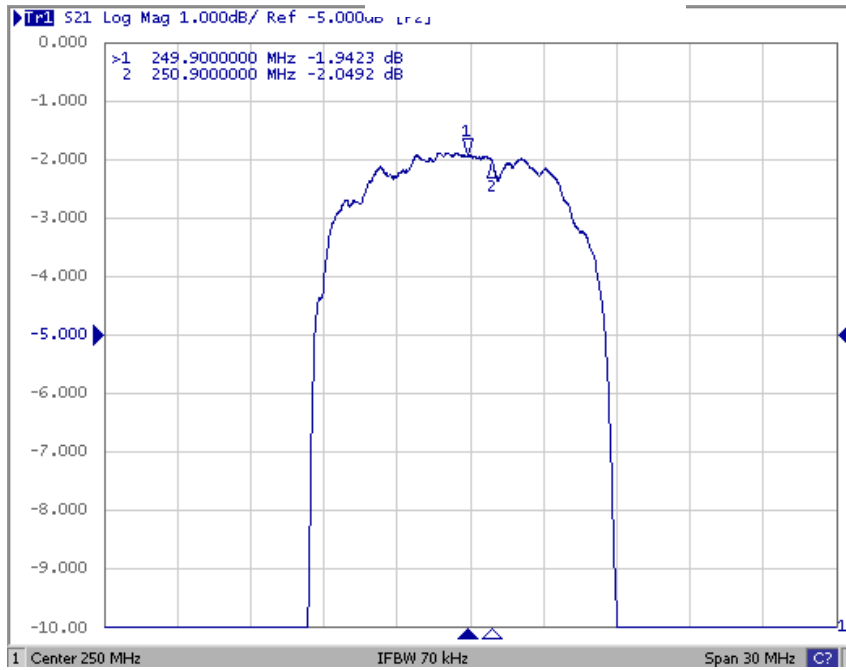


**250MHz SAW Filter**  
**Part No: MP02018**

**Model: TA0998A**  
**REV NO.: 1**

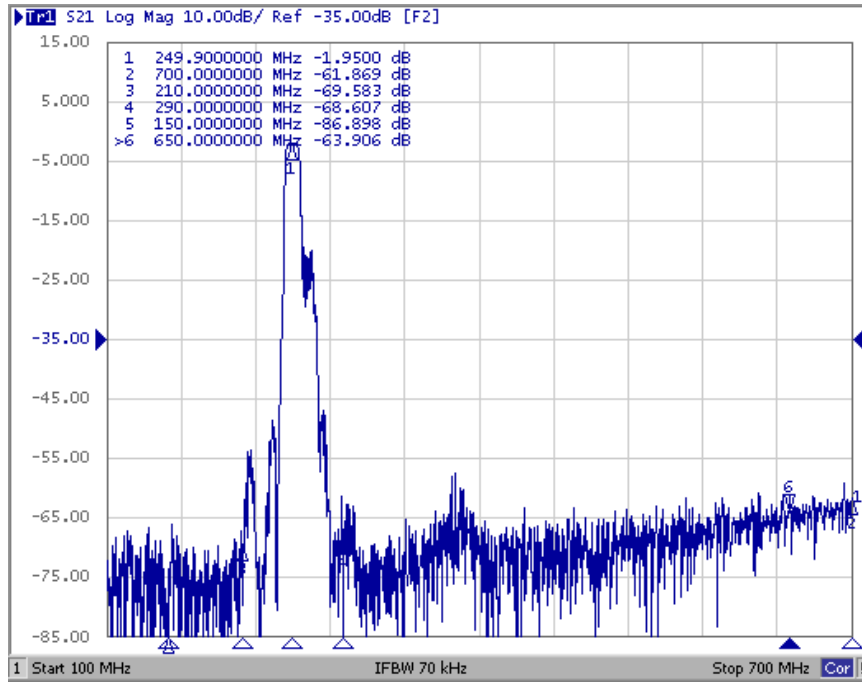
**F. FREQUENCY CHARACTERISTICS:**

**Transfer function**



**250MHz SAW Filter**  
**Part No: MP02018**

**Model: TA0998A**  
**REV NO.: 1**

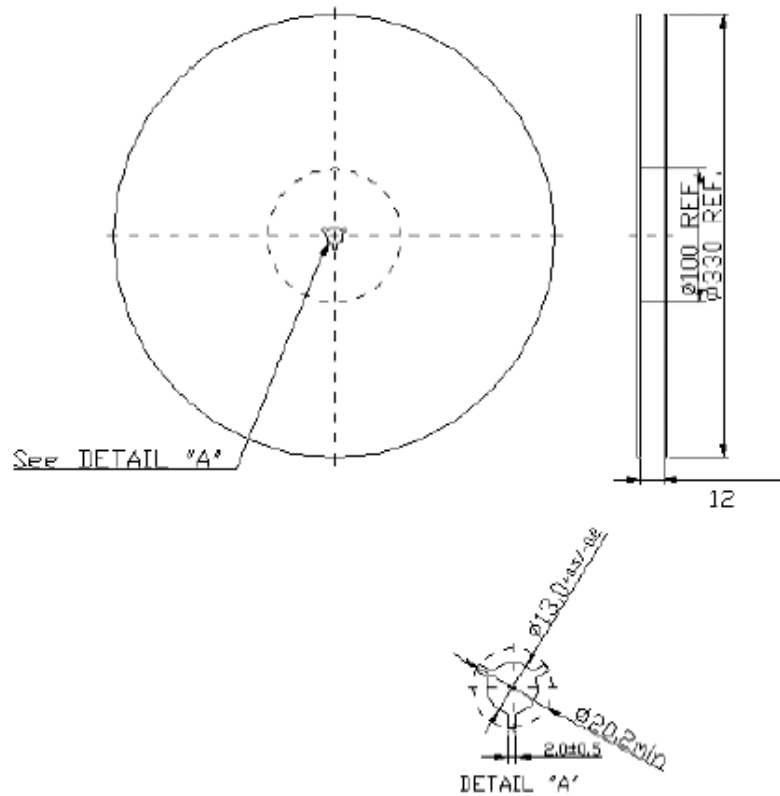


**250MHz SAW Filter**  
**Part No: MP02018**

**Model: TA0998A**  
**REV NO.: 1**

**G. PACKING:**

**1. REEL DIMENSION**



**2. TAPE DIMENSION**

